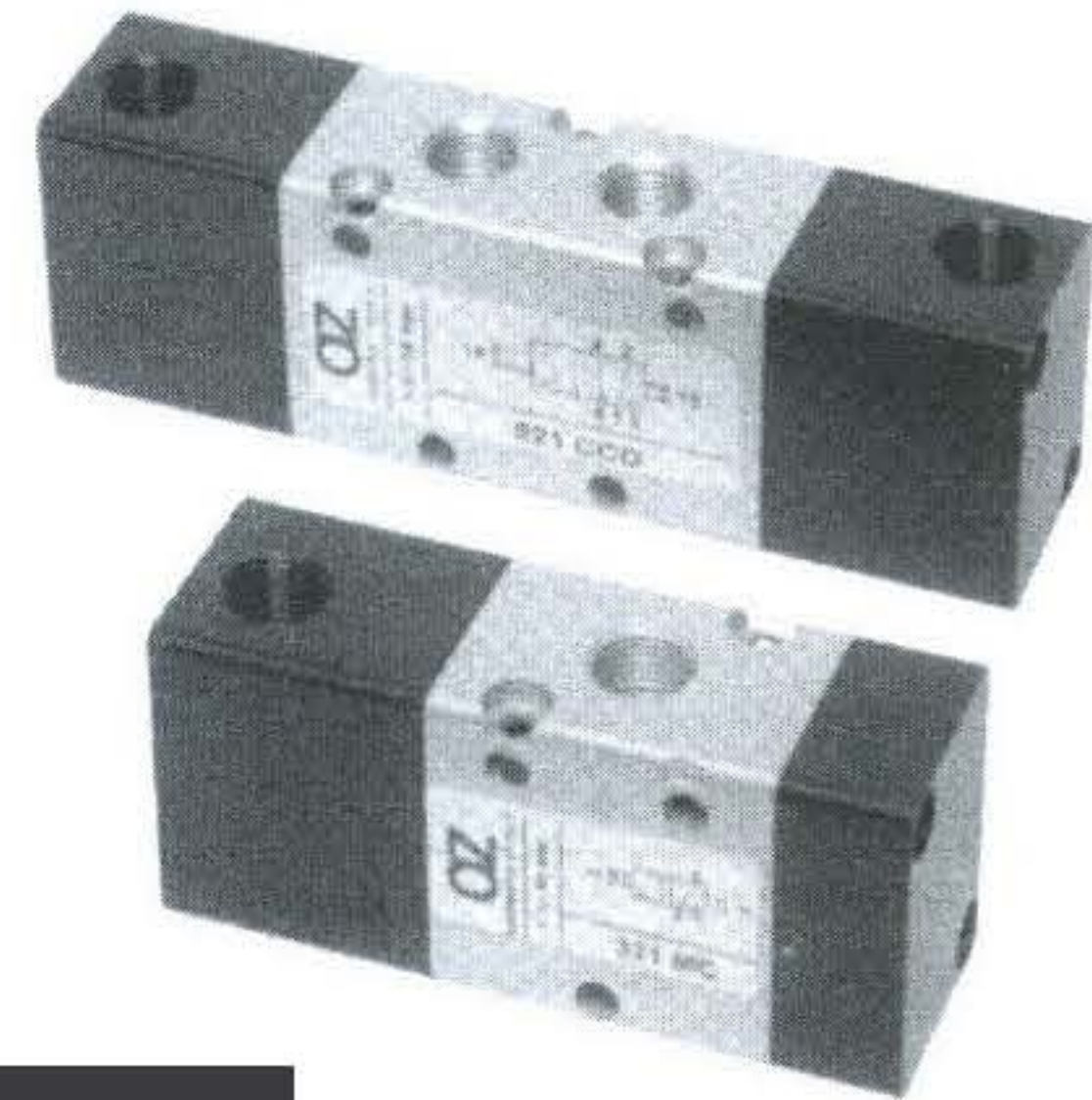
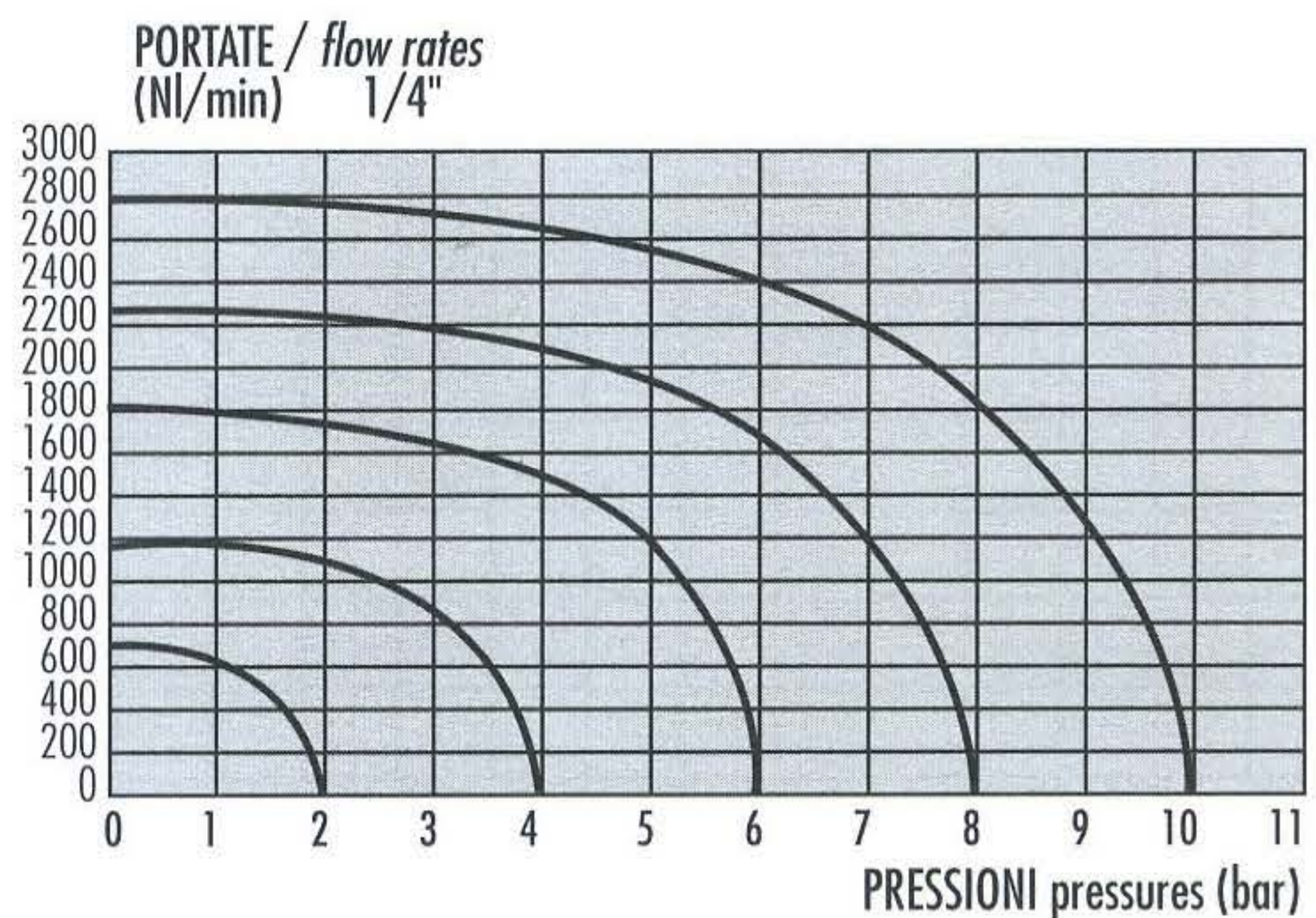
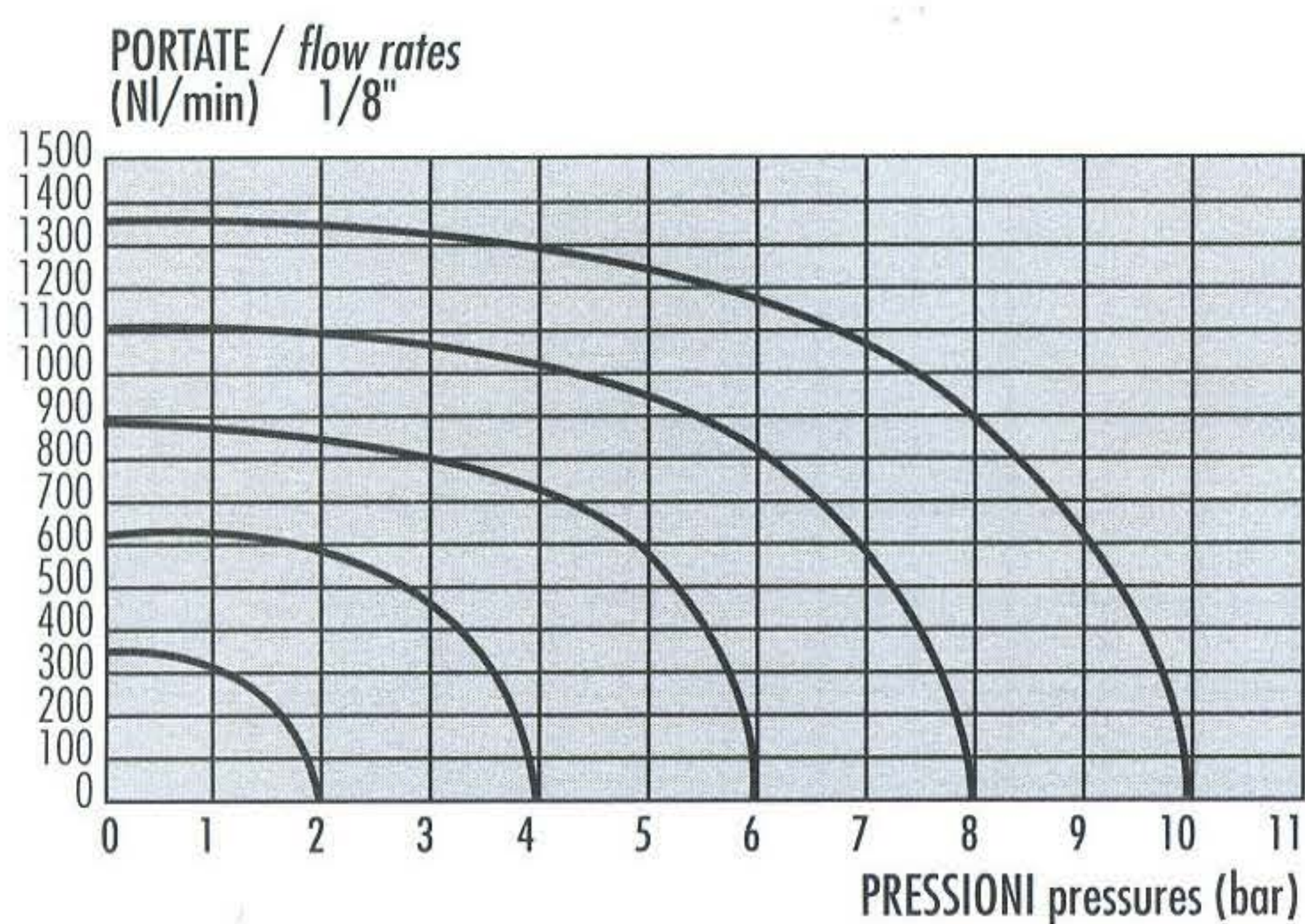


- Valvole a spola 3/2-5/2-5/3 con attacchi filettati G1/8" - G1/4" - G1/2"  
3/2-5/2-5/3 spool valves with G1/8" - G1/4" - G1/2" threaded ports
- Montaggio in linea, su collettori multipli o su basi manifold  
Installation in-line, gang or manifold mounted
- Ampia gamma di azionamenti  
Comprehensive range of actuations
- Versioni con elemento logico integrato  
Versions with integrated logic element
- Esecuzioni speciali a richiesta  
Special versions on request



**Versione ATEX II 2GD cII T6  
su richiesta**



### Tempi di risposta/response times

	1/8	1/4
<b>monostabile</b> <i>mono - stable</i>	TRA (14): 6ms TRR (12): 15ms	TRA (14): 7ms TRR (12): 15ms
<b>bistabile</b> <i>bi - stable</i>	TRA (14): 7ms TRR (12): 7ms	TRA (14): 7ms TRR (12): 7ms

Diametro nominale <i>Nominal orifice</i>	1/8": 5 mm 1/4": 7.5 mm	
Temperatura di esercizio <i>Temperature range</i>	max + 60°C	
Pressione di esercizio <i>Working pressure</i>	max 10 bar max 1 MPa	
Pressione di azionamento <i>Actuating pressure</i>	monostabile ( <i>mono-stable</i> )	bistabile ( <i>bi-stable</i> )
	2.5 ... 10 bar 0.25 ... 1 MPa	1 ... 10 bar 0.1 ... 1 MPa
Fluido <i>Fluid</i>	Aria filtrata 50µ con o senza lubrificazione 50µ filtered, lubricated or non lubricated air	

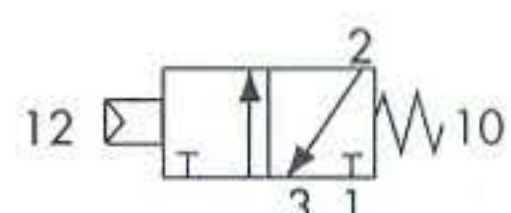
### Materiali

**Corpo:** alluminio 11S  
**Molle:** INOX  
**Guarnizioni:** NBR  
**Spola:** alluminio nichelato  
**Parti interne:** ottone OT58

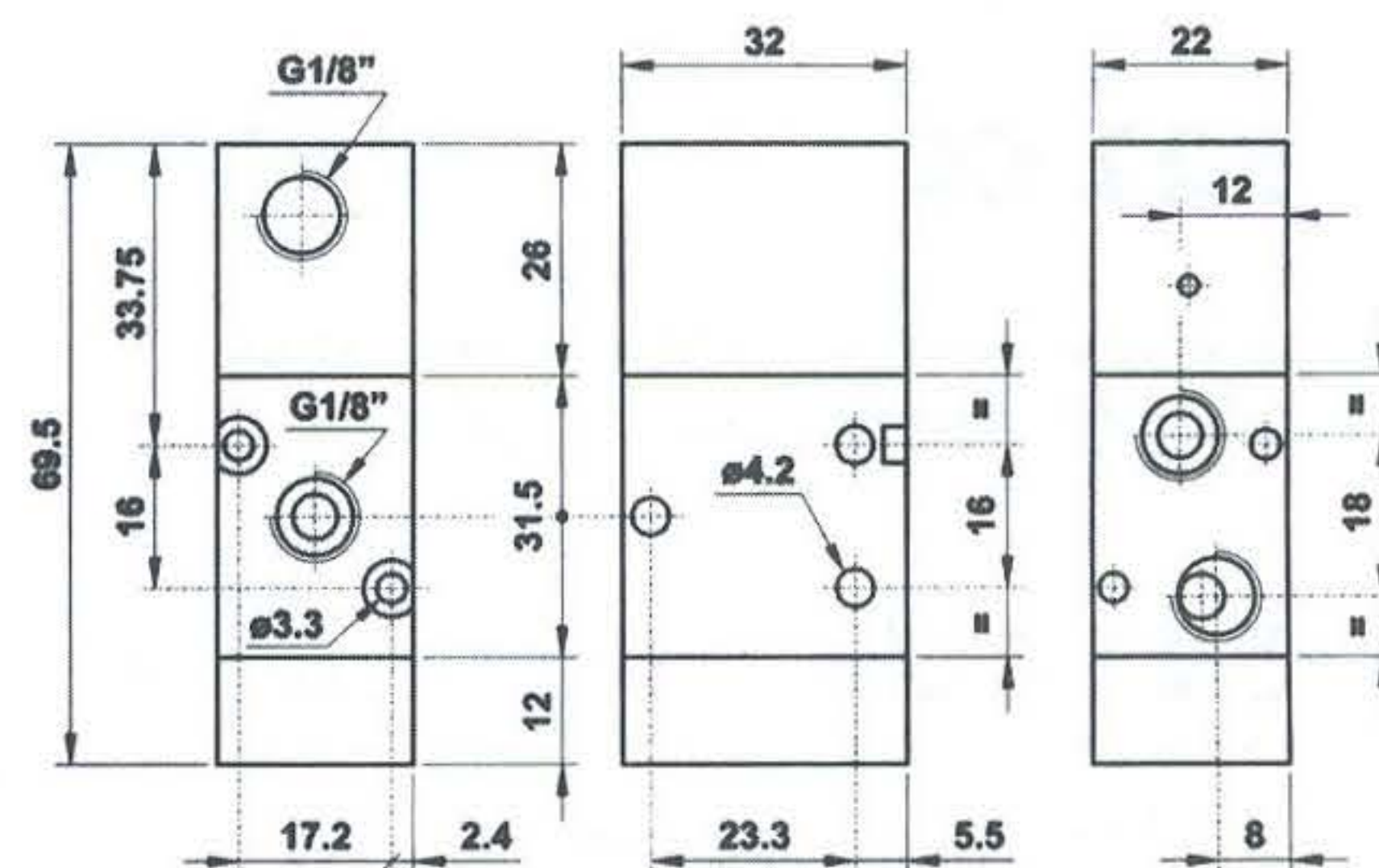
### Materials

**Body:** aluminium 11S  
**Spring:** stainless steel  
**Seals:** NBR  
**Spool:** nickel plated aluminium  
**Internal parts:** brass OT58

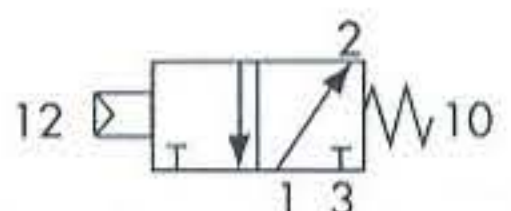
## 321 MC



3/2 1/8" NC comando pneumatico - ritorno a molla  
3/2 1/8" NC *pneumatic pilot - spring return*

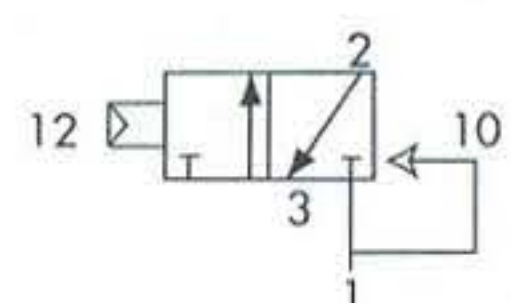


## 321 MCA

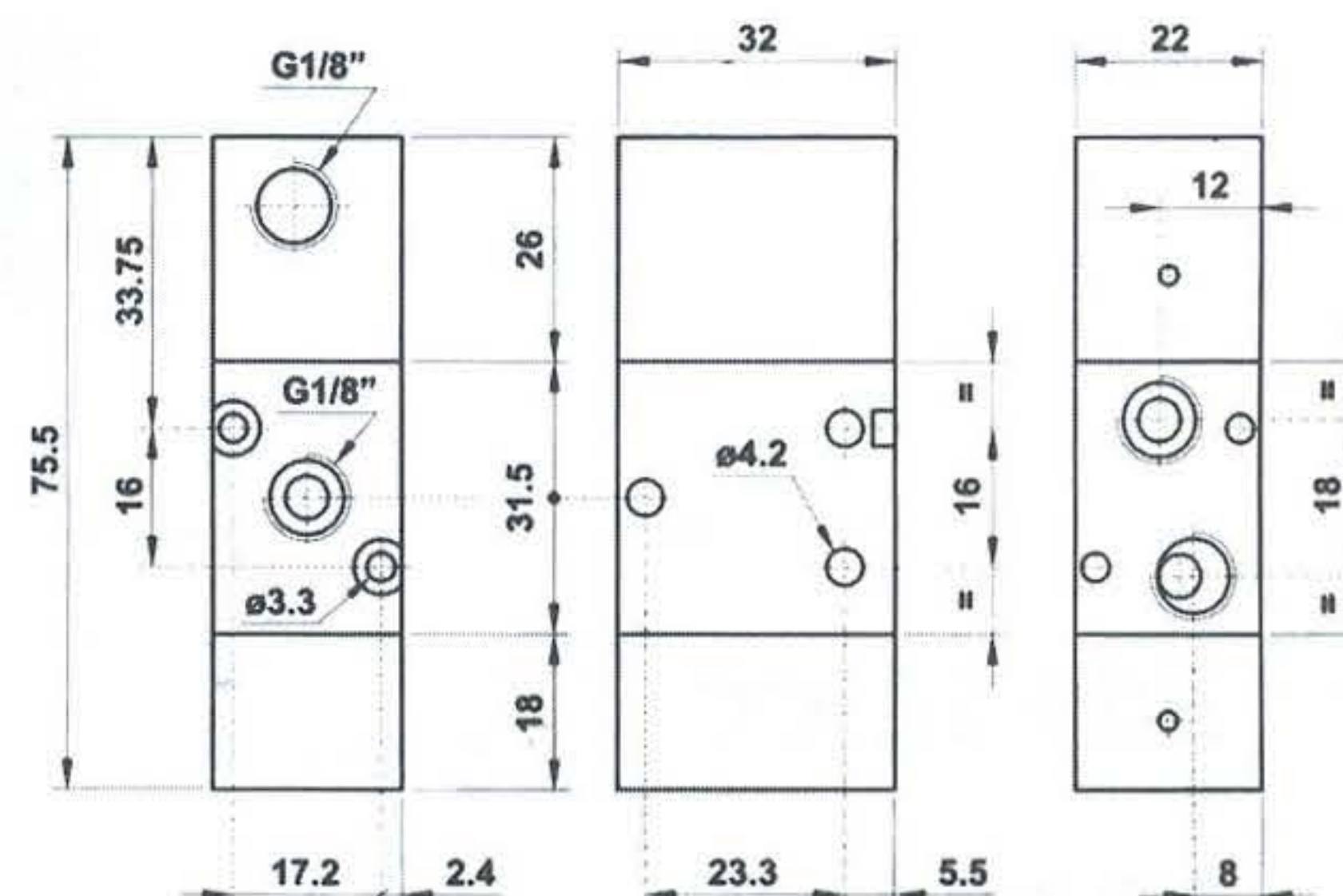
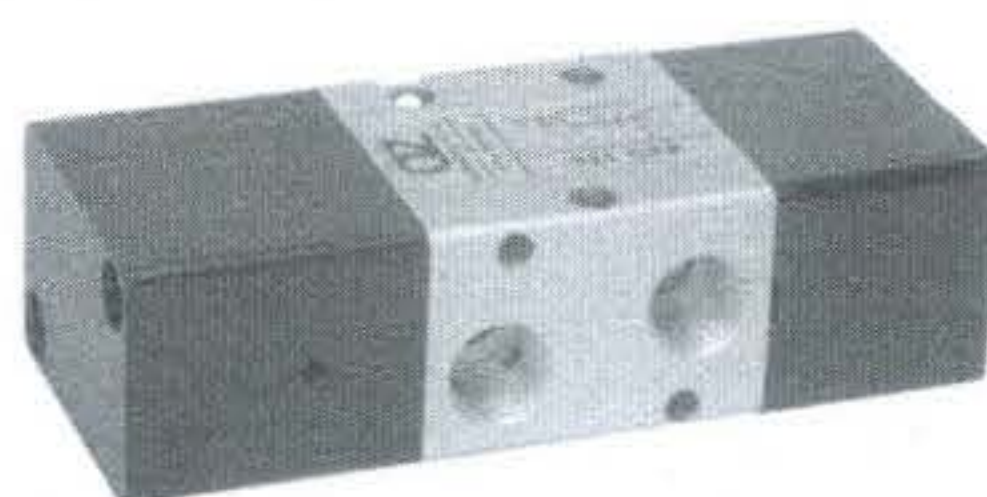


3/2 1/8" NA comando pneumatico - ritorno a molla  
3/2 1/8" NO *pneumatic pilot - spring return*

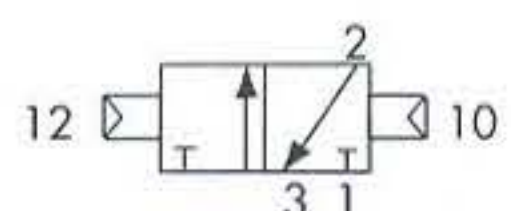
## 321 CFP



3/2 1/8" NC comando pneumatico - ritorno a molla pneumatica  
3/2 1/8" NC *pneumatic pilot - pneumatic spring return*

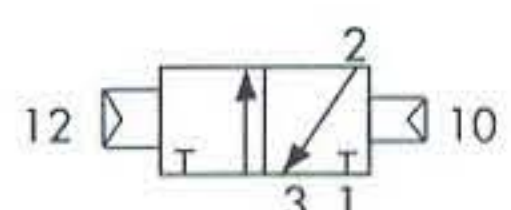


## 321 CC

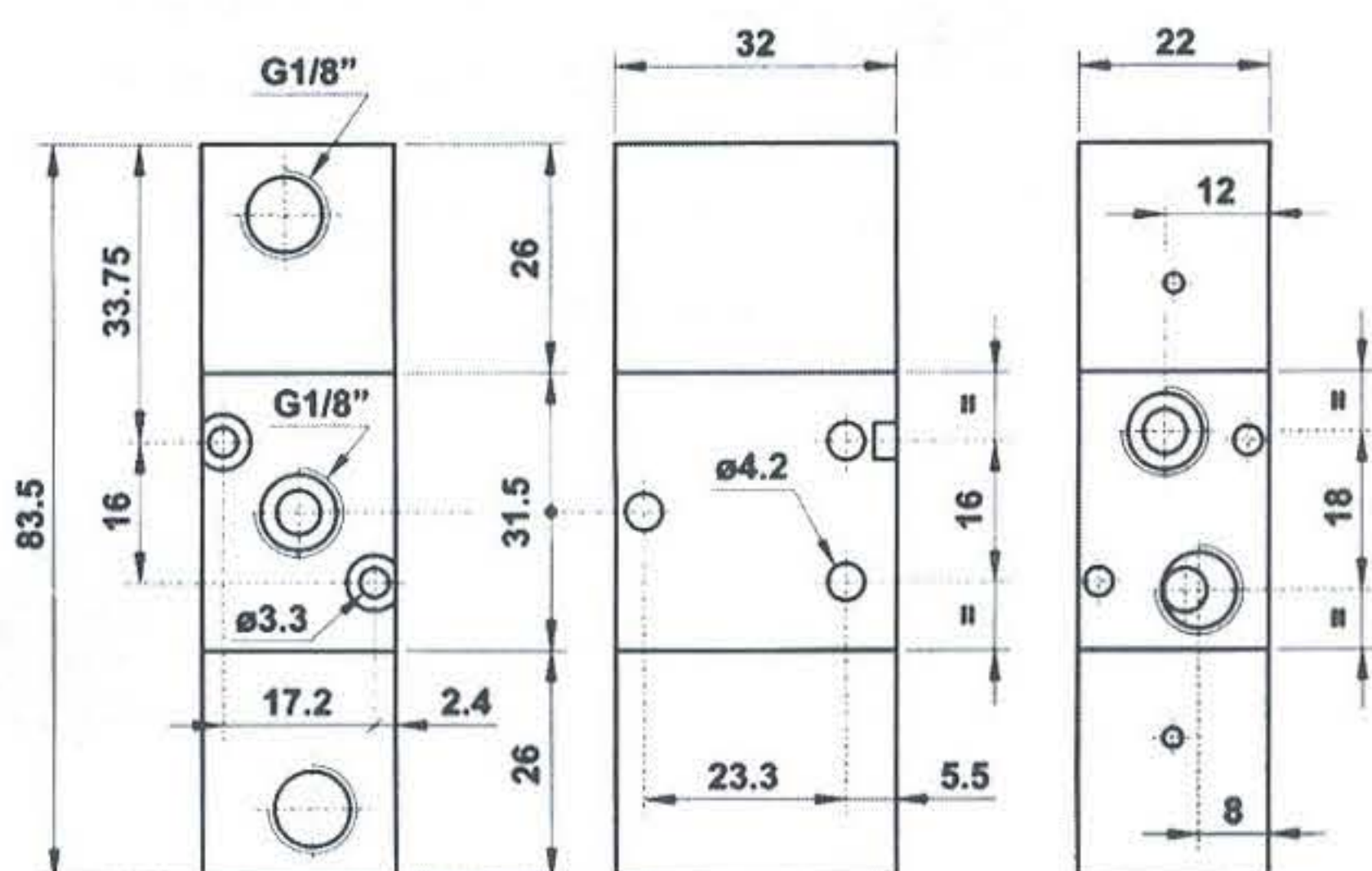


3/2 1/8" doppio comando pneumatico  
3/2 1/8" *double pneumatic pilot*

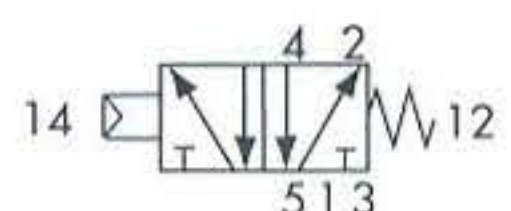
## 321 CCD



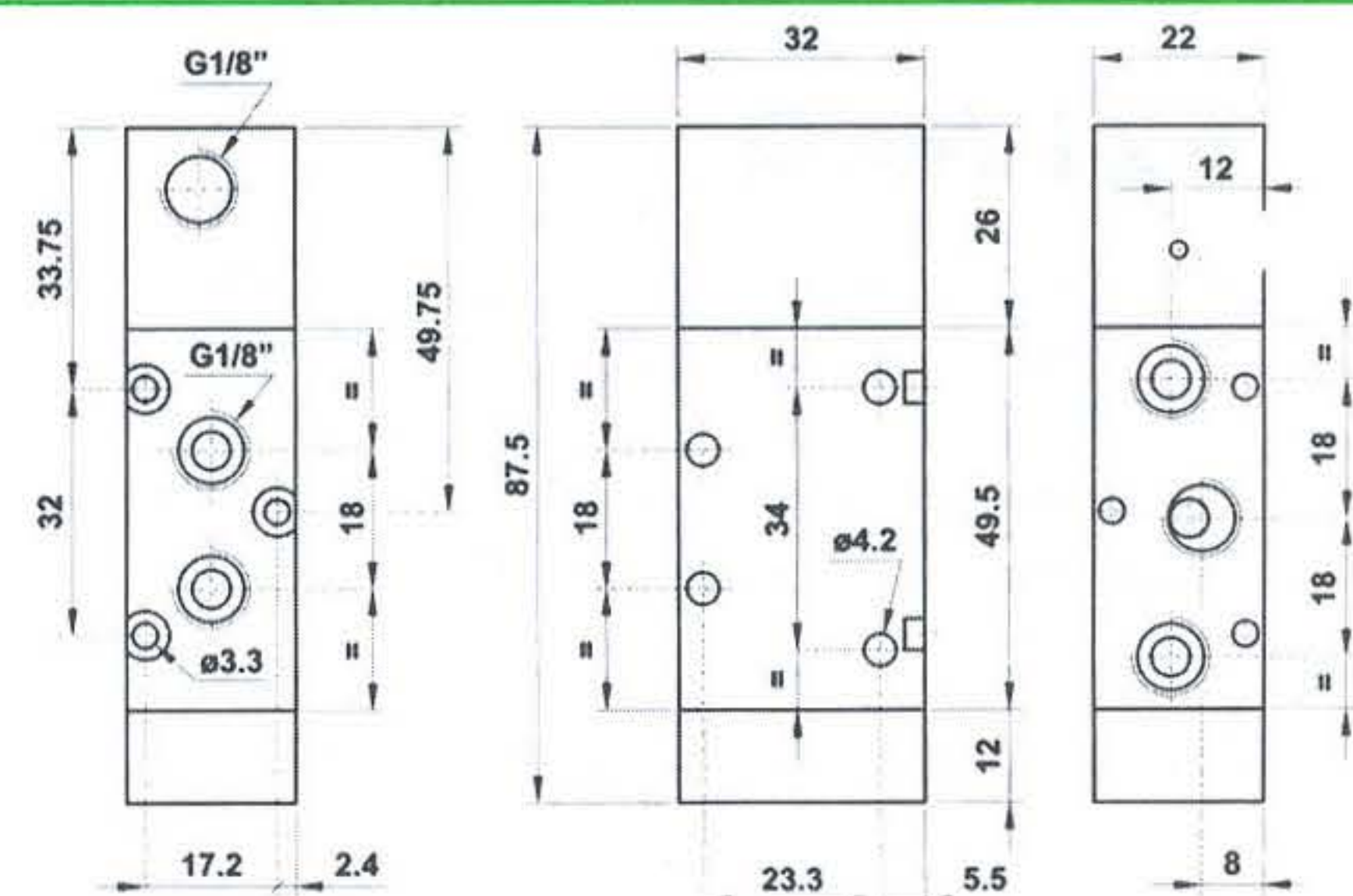
3/2 1/8" doppio comando pneumatico con differenziale  
3/2 1/8" *double pneumatic pilot with differential*



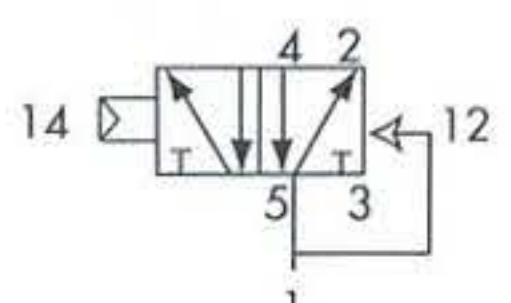
## 521 MC



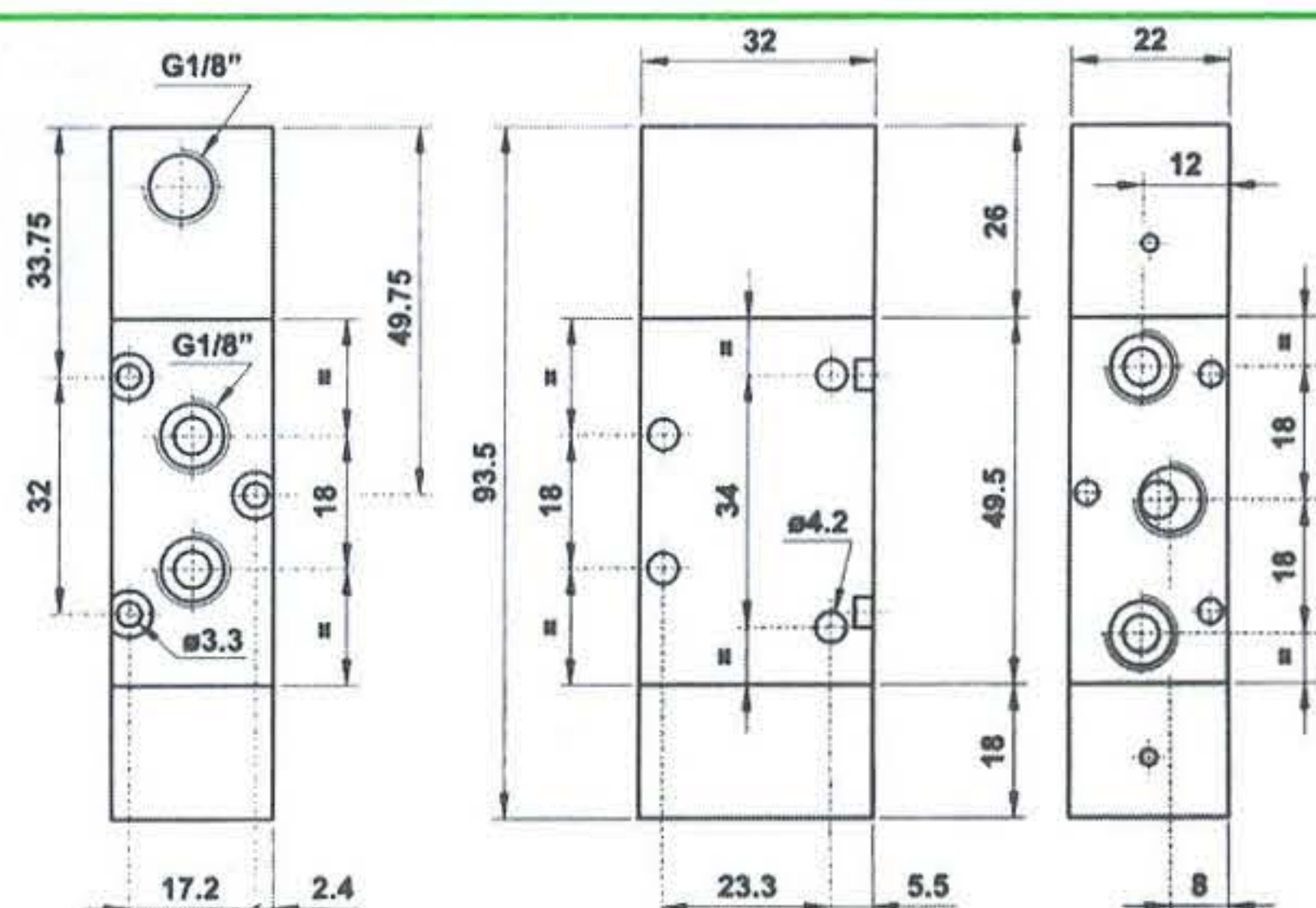
5/2 1/8" comando pneumatico - ritorno a molla  
5/2 1/8" *pneumatic pilot - spring return*



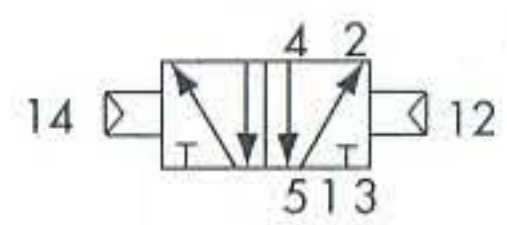
## 521 CFP



5/2 1/8" comando pneumatico - ritorno a molla pneumatica  
5/2 1/8" *pneumatic pilot - pneumatic spring return*

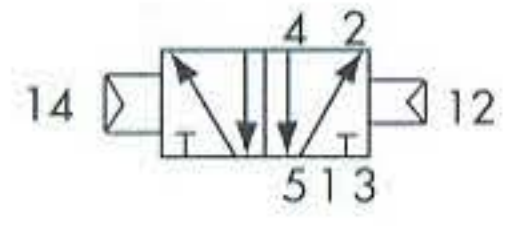


## 521 CC

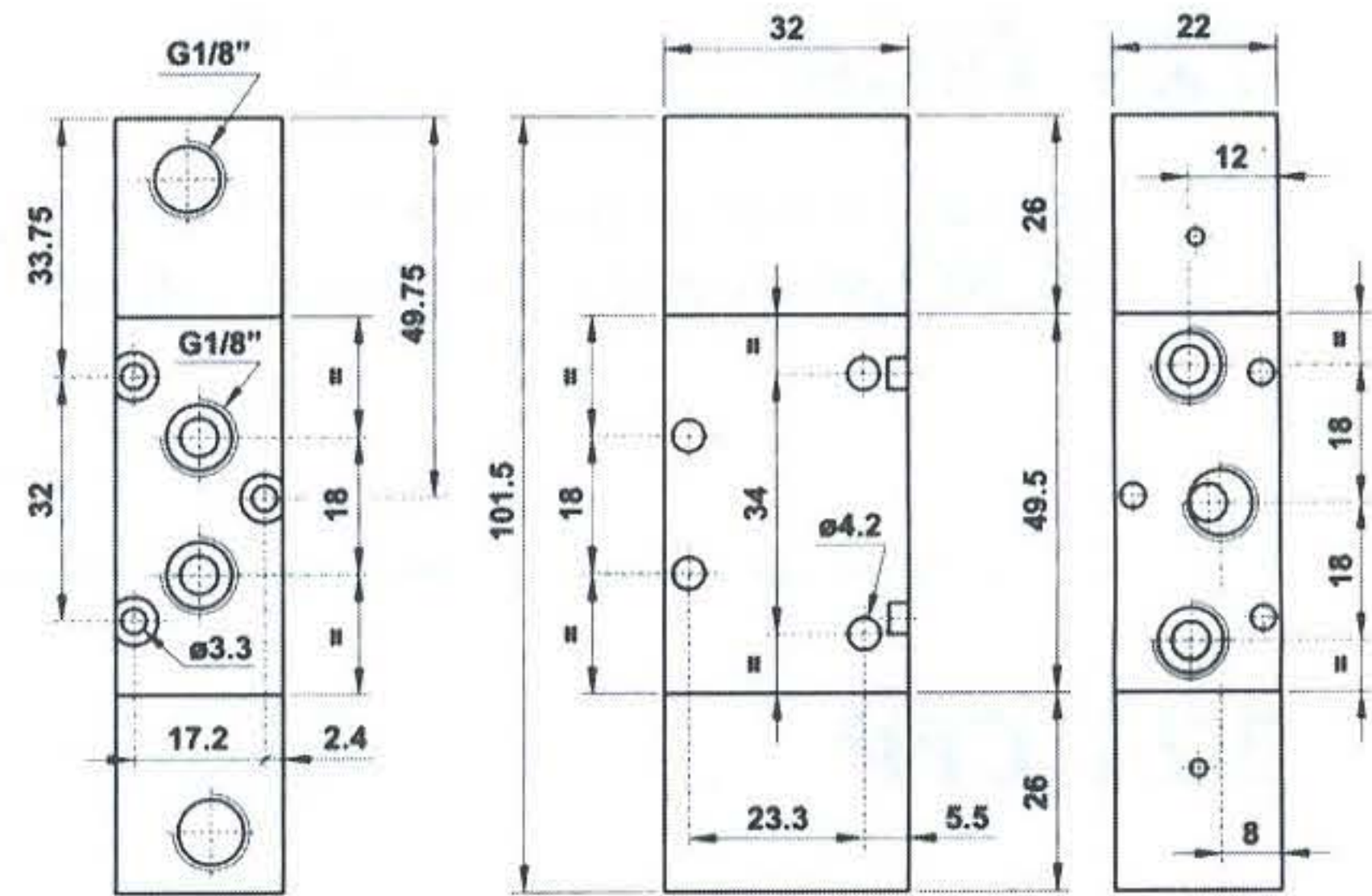


5/2 1/8" doppio comando pneumatico  
5/2 1/8" double pneumatic pilot

## 521 CCD

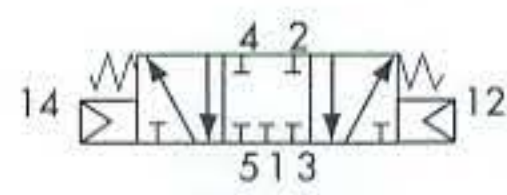


5/2 1/8" doppio comando pneumatico - con differenziale  
5/2 1/8" double pneumatic pilot - with differential



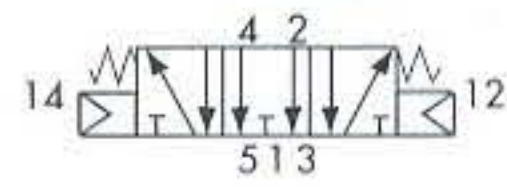
## 5213C CC

centri chiusi  
closed centres



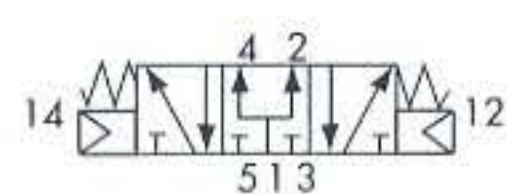
## 5213A CC

centri aperti  
open centres

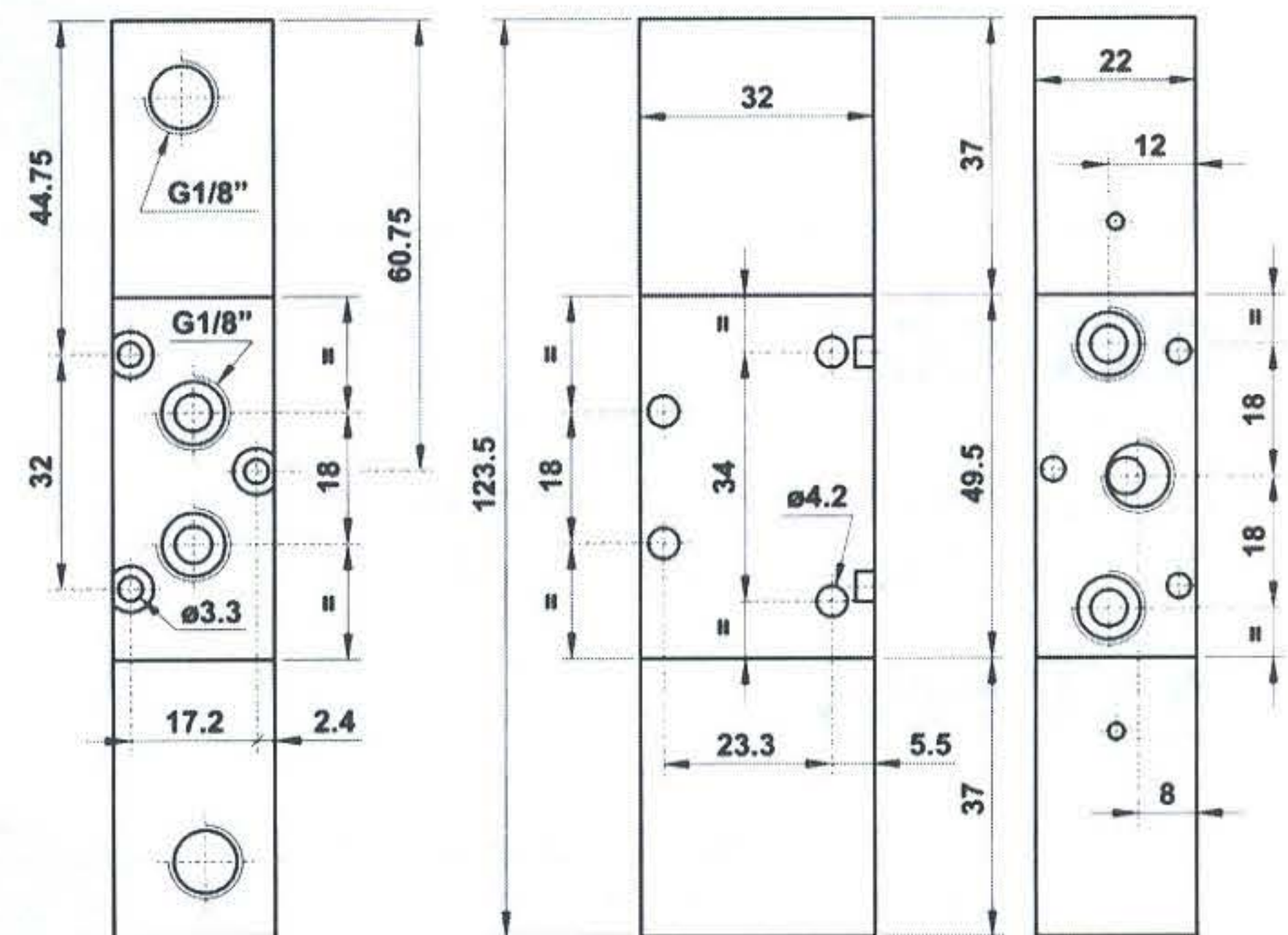
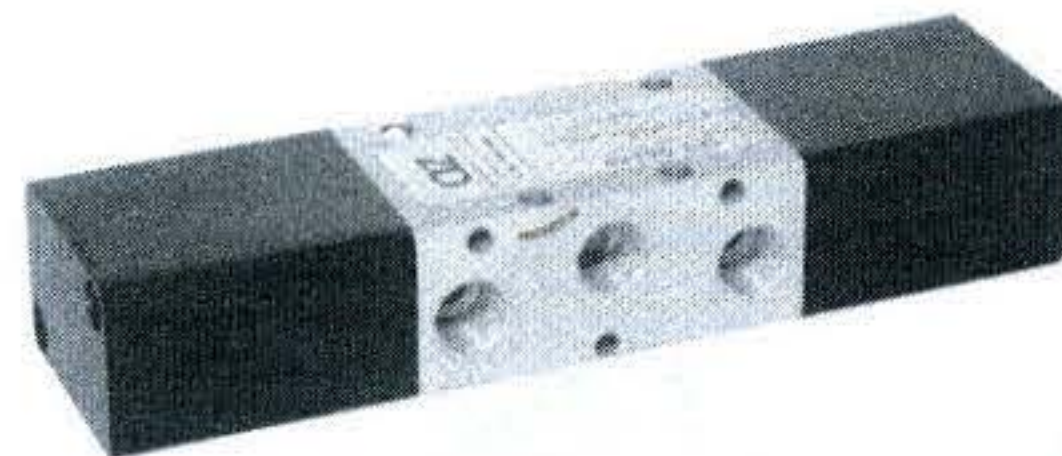


## 5213P CC

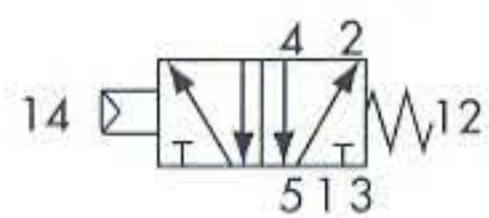
centri in pressione  
pressurized centres



5/3 1/8" doppio comando pneumatico  
5/3 1/8" double pneumatic pilot



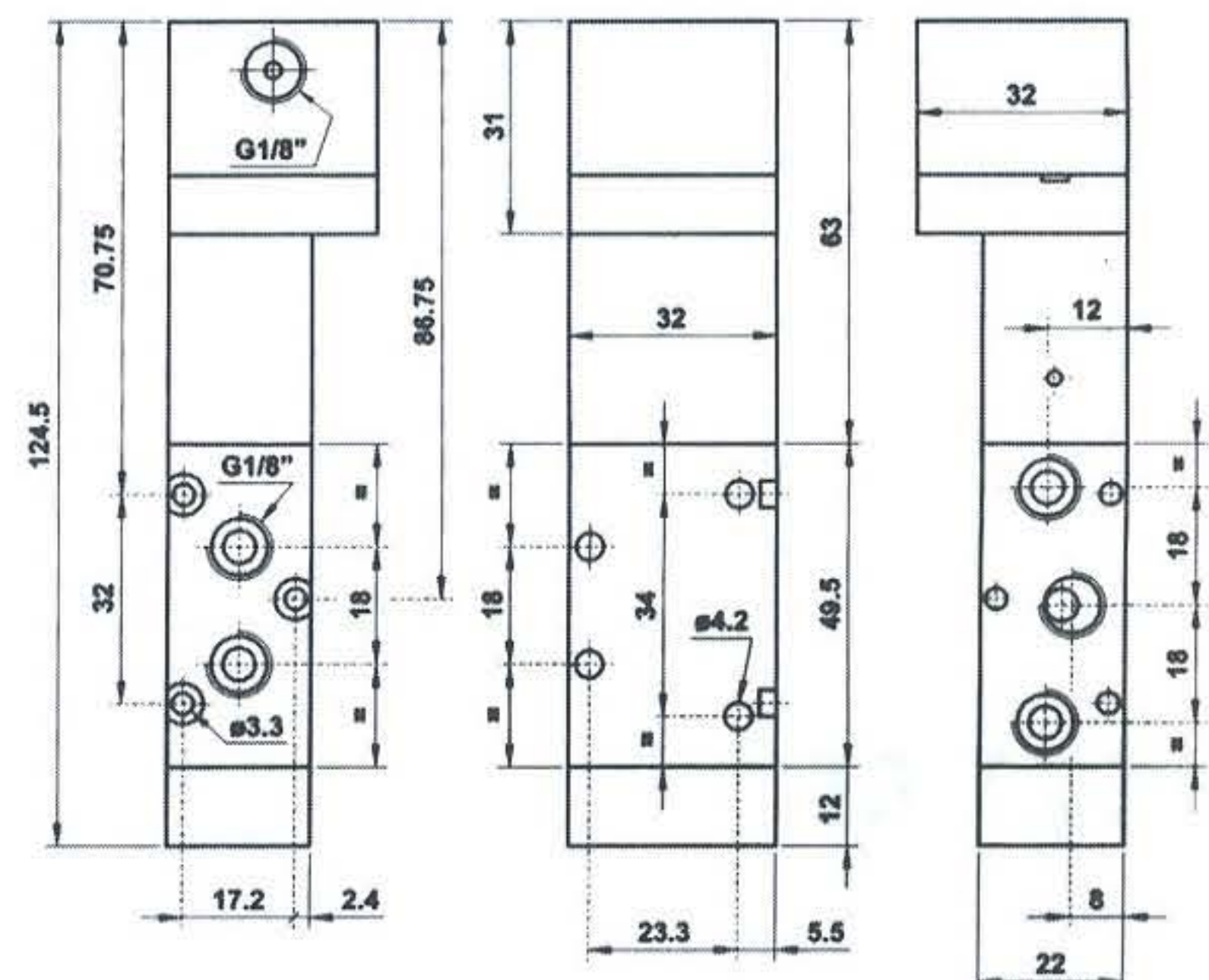
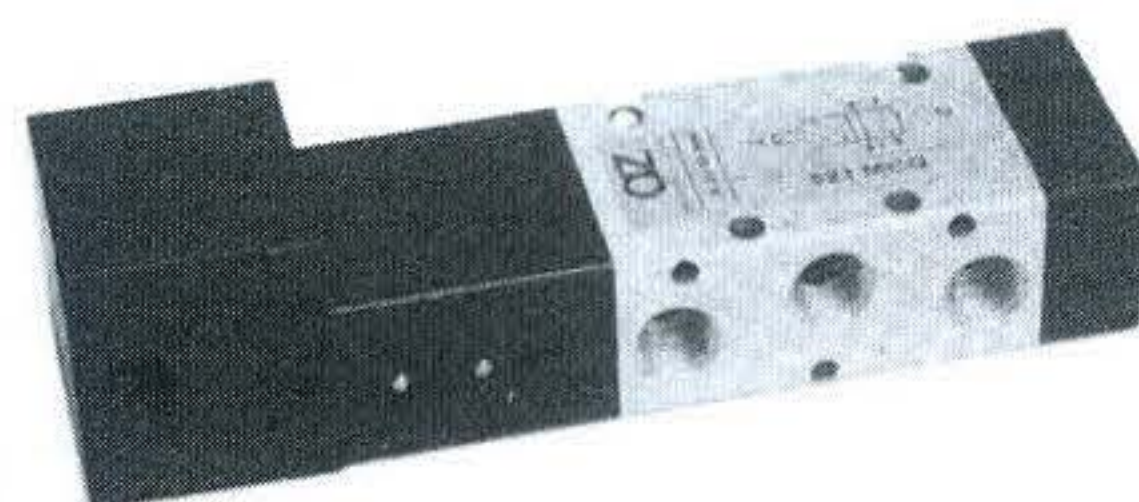
## 521 MCQ



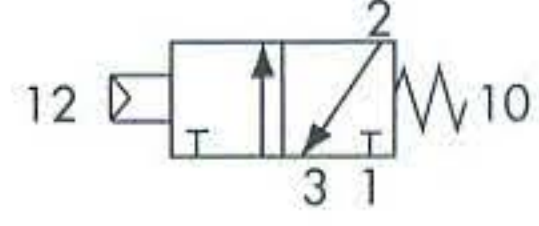
5/2 1/8" comando pneumatico 0.3 bar - ritorno a molla  
5/2 1/8" pneumatic pilot 0.3 bar - spring return

Pressione di lavoro: min. 2.5 bar (0.25 MPa)  
Pressione di comando: min. 0.3 bar (0.03 MPa)

Work pressure: min. 2.5 bar (0.25 MPa)  
Pilot pressure: min. 0.3 bar (0.03 MPa)

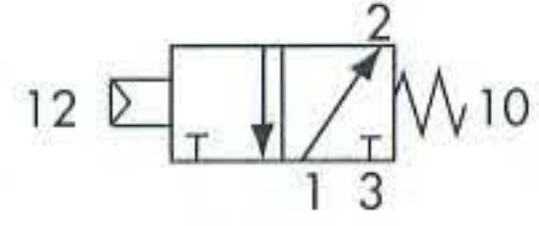


## 322 MC

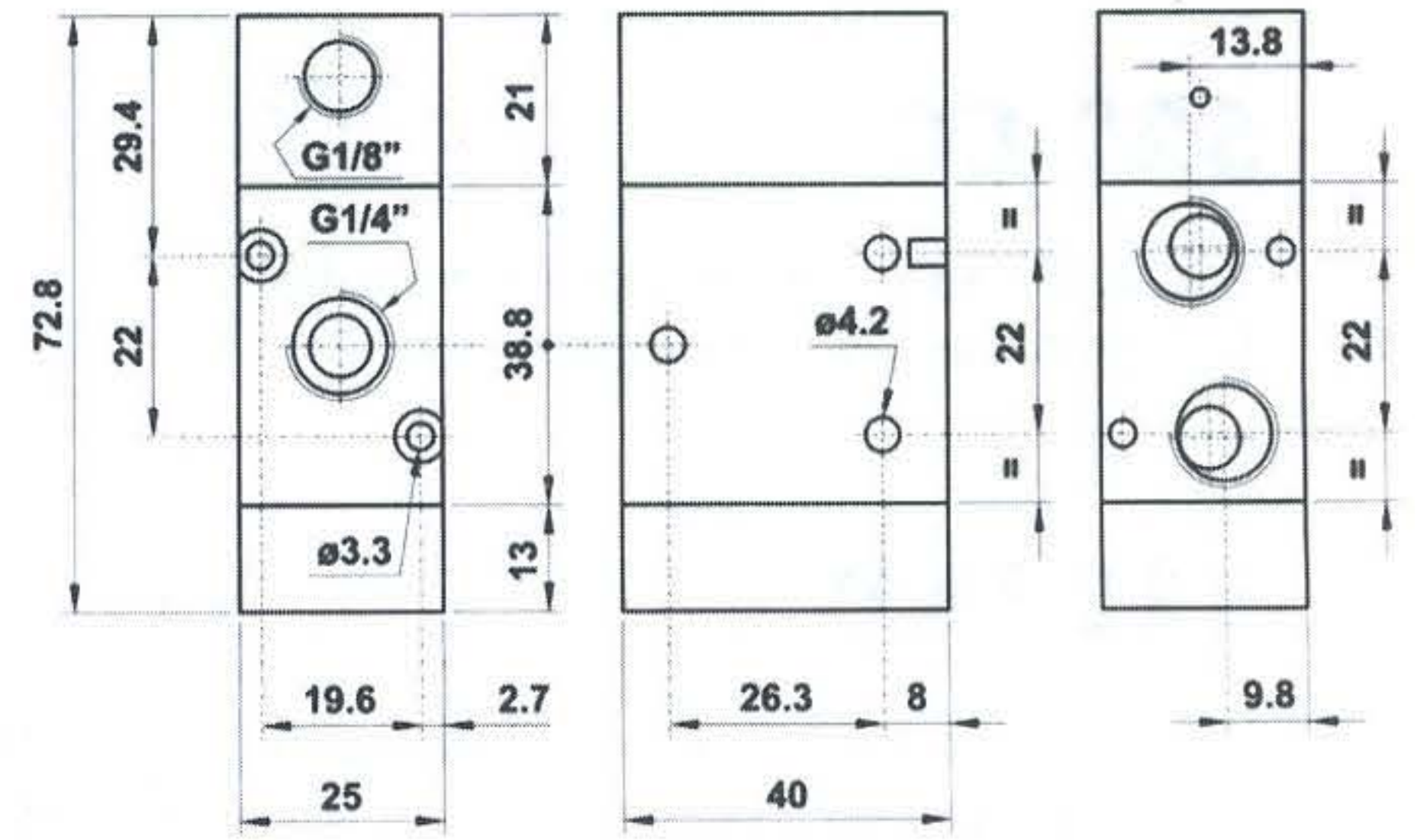
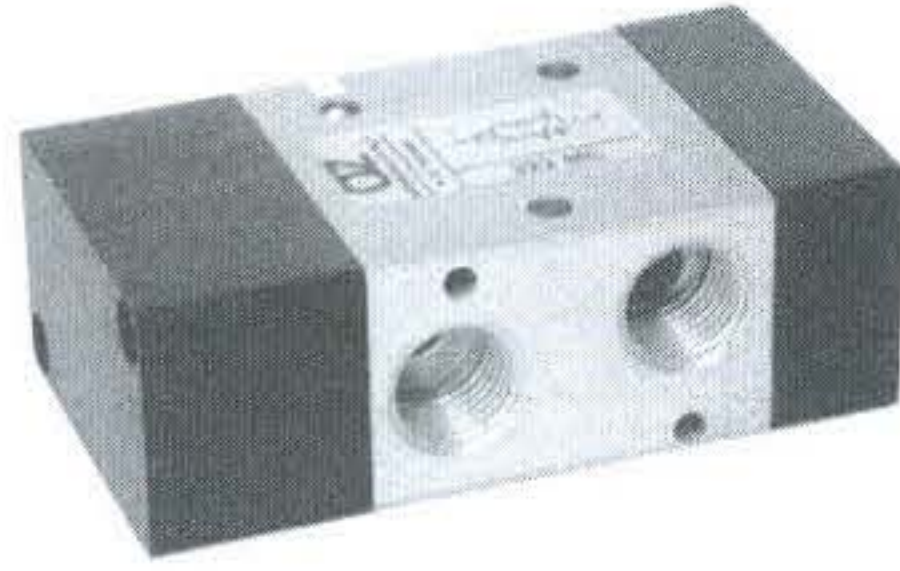


3/2 1/4" NC comando pneumatico - ritorno a molla  
 3/2 1/4" NC *pneumatic pilot - spring return*

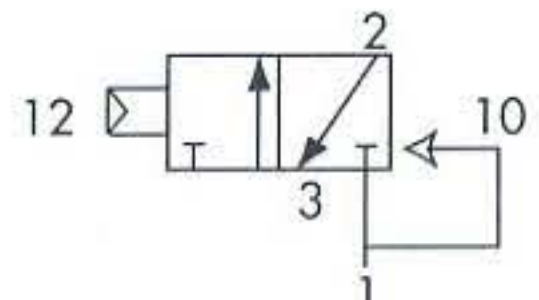
## 322 MCA



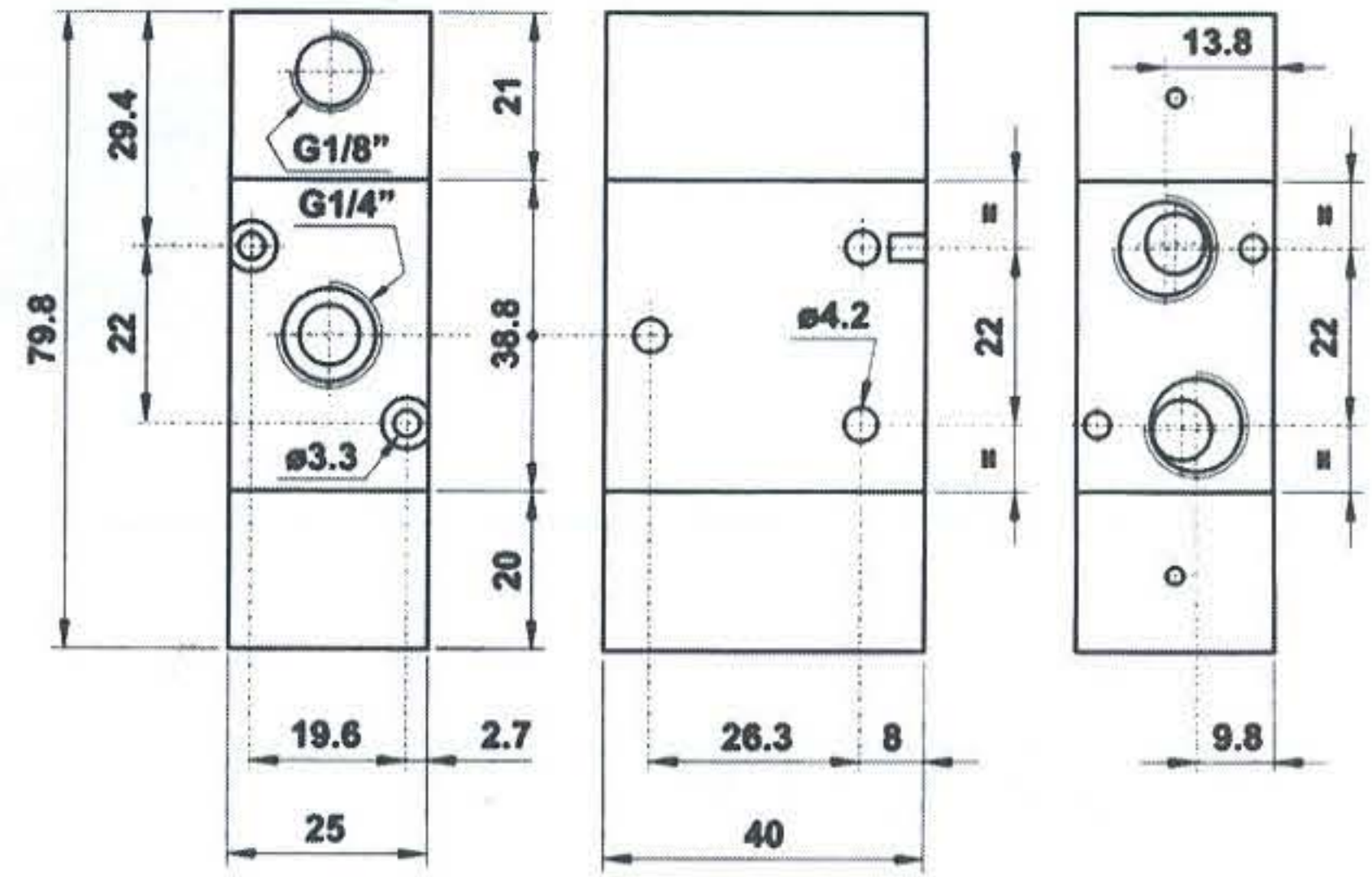
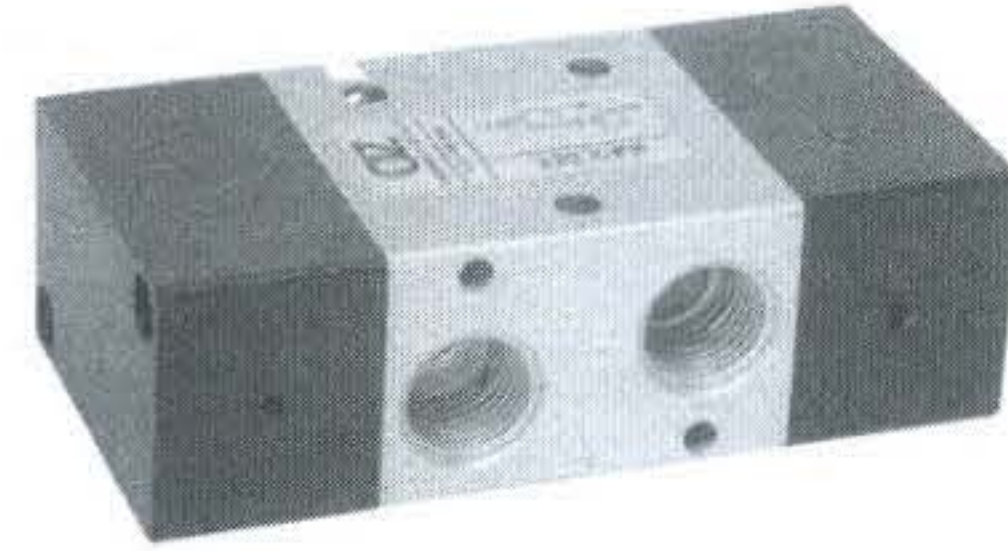
3/2 1/4" NA comando pneumatico  
 ritorno a molla  
 3/2 1/4" NO *pneumatic pilot  
 spring return*



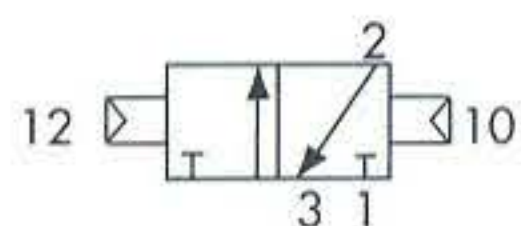
## 322 CFP



3/2 1/4" NC comando pneumatico - ritorno a molla pneumatica  
 3/2 1/4" NC *pneumatic pilot - pneumatic spring return*

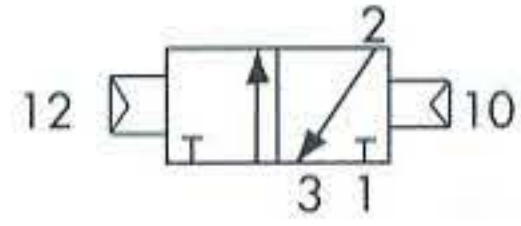


## 322 CC

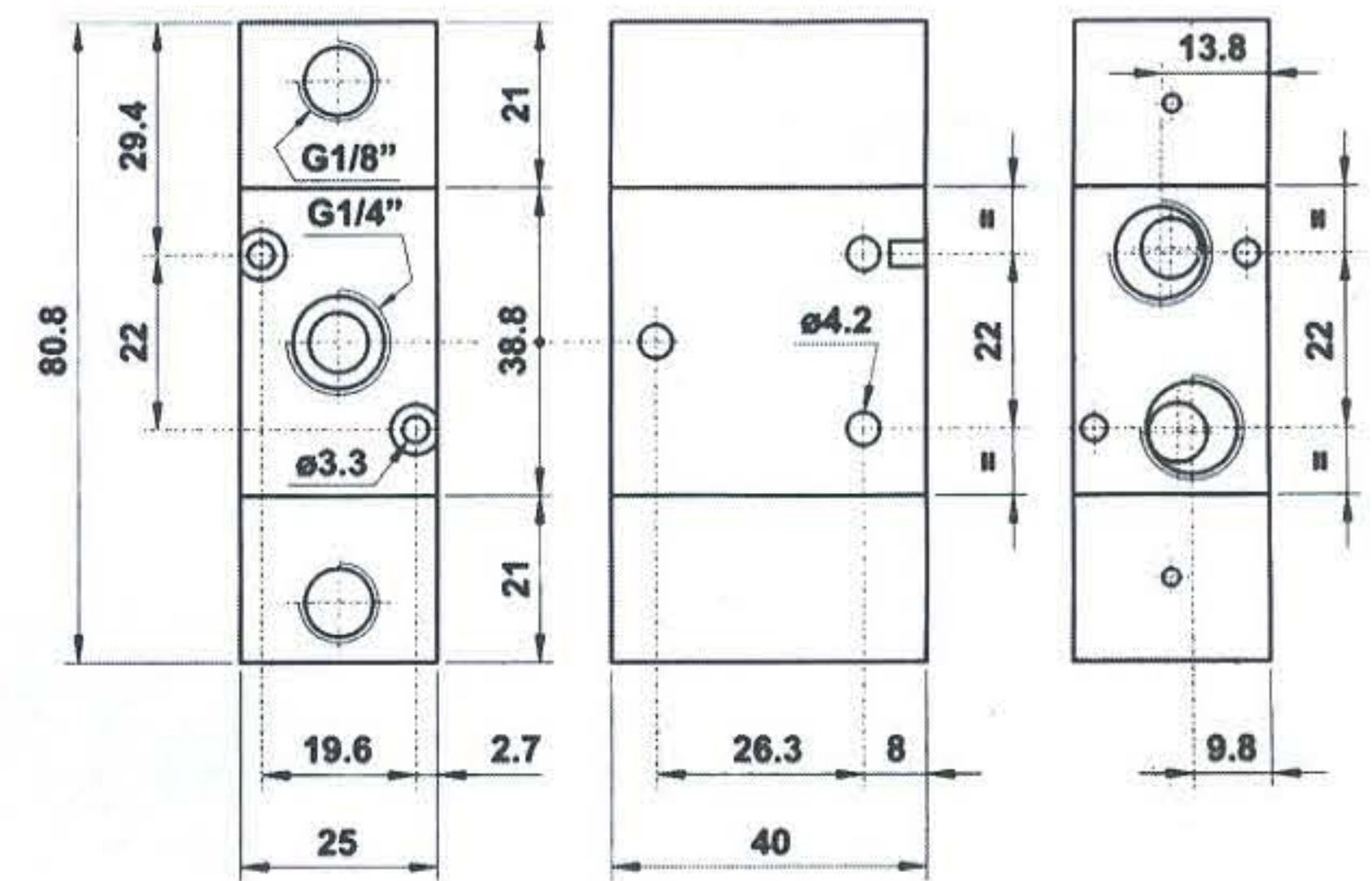
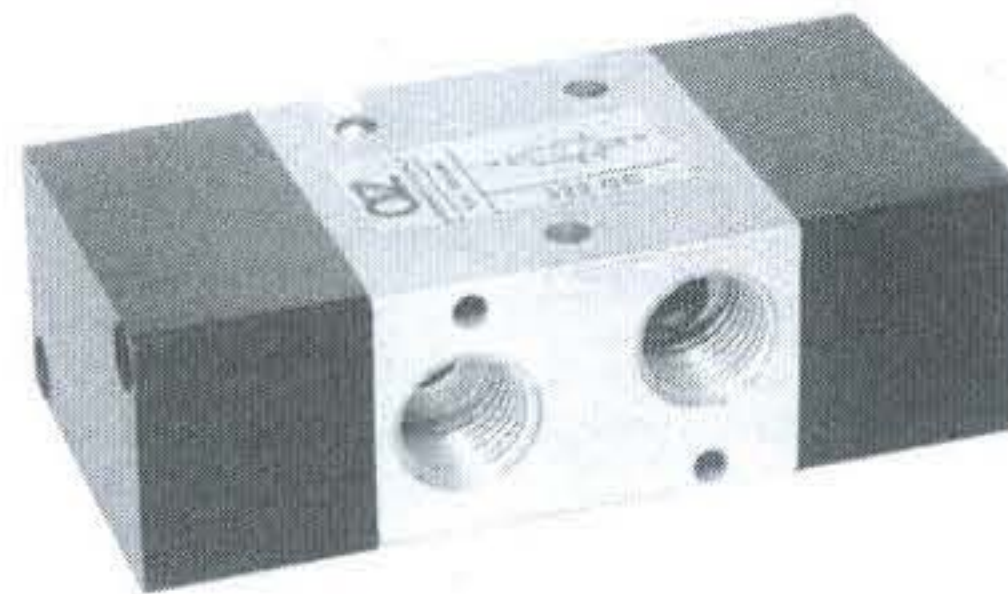


3/2 1/4" doppio comando pneumatico  
 3/2 1/4" *double pneumatic pilot*

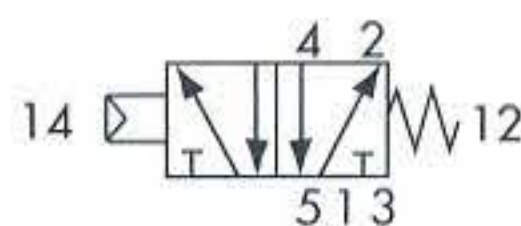
## 322 CCD



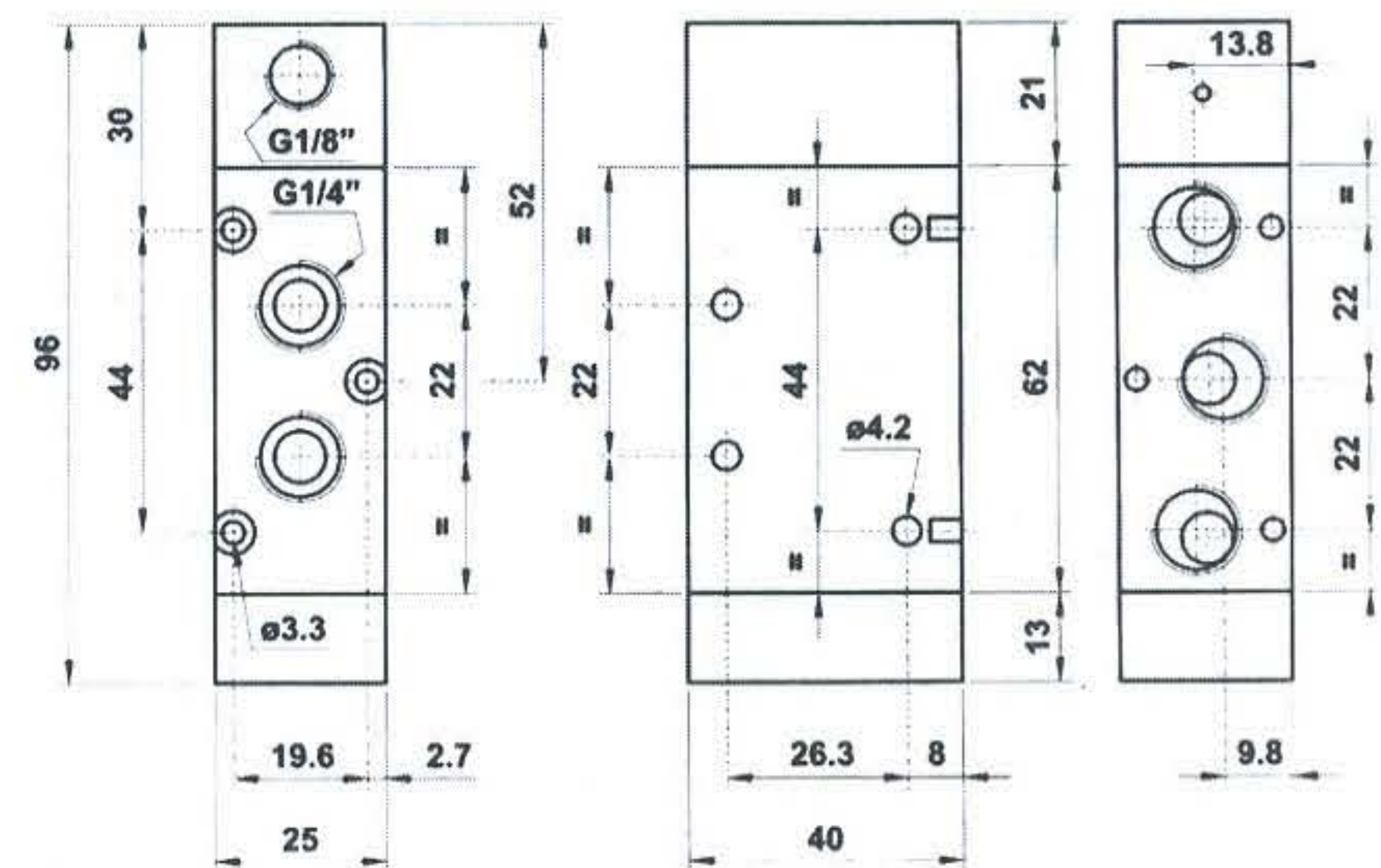
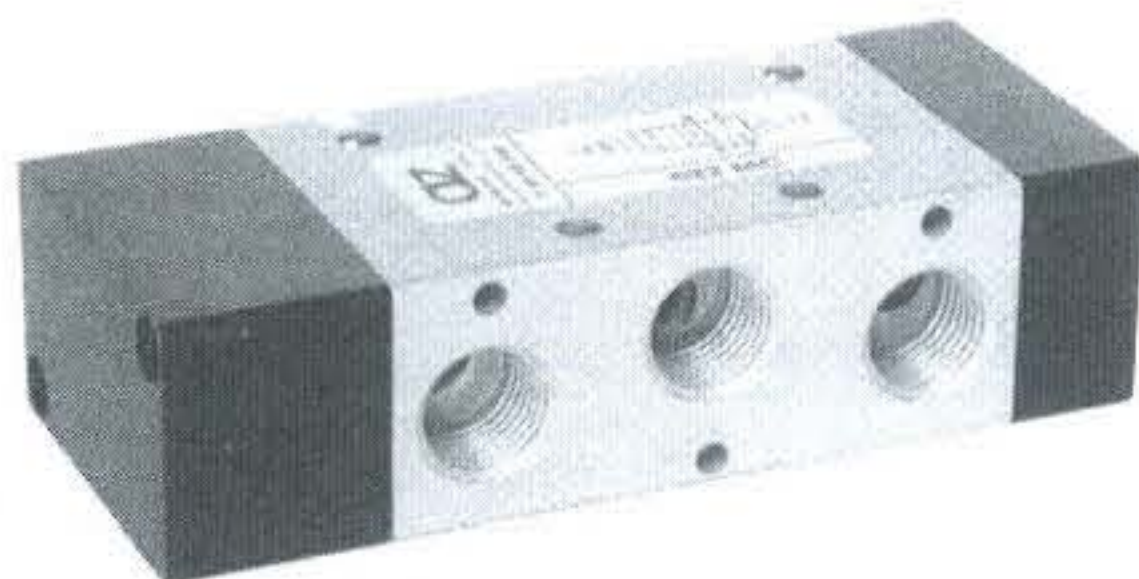
3/2 1/4" doppio comando pneumatico  
 con differenziale  
 3/2 1/4" *double pneumatic pilot  
 with differential*



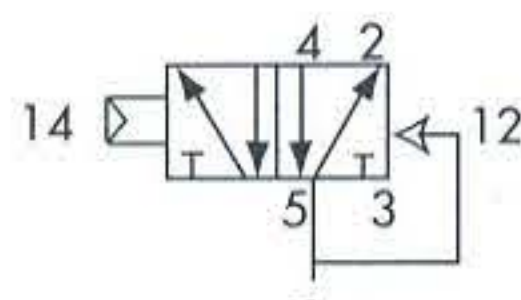
## 522 MC



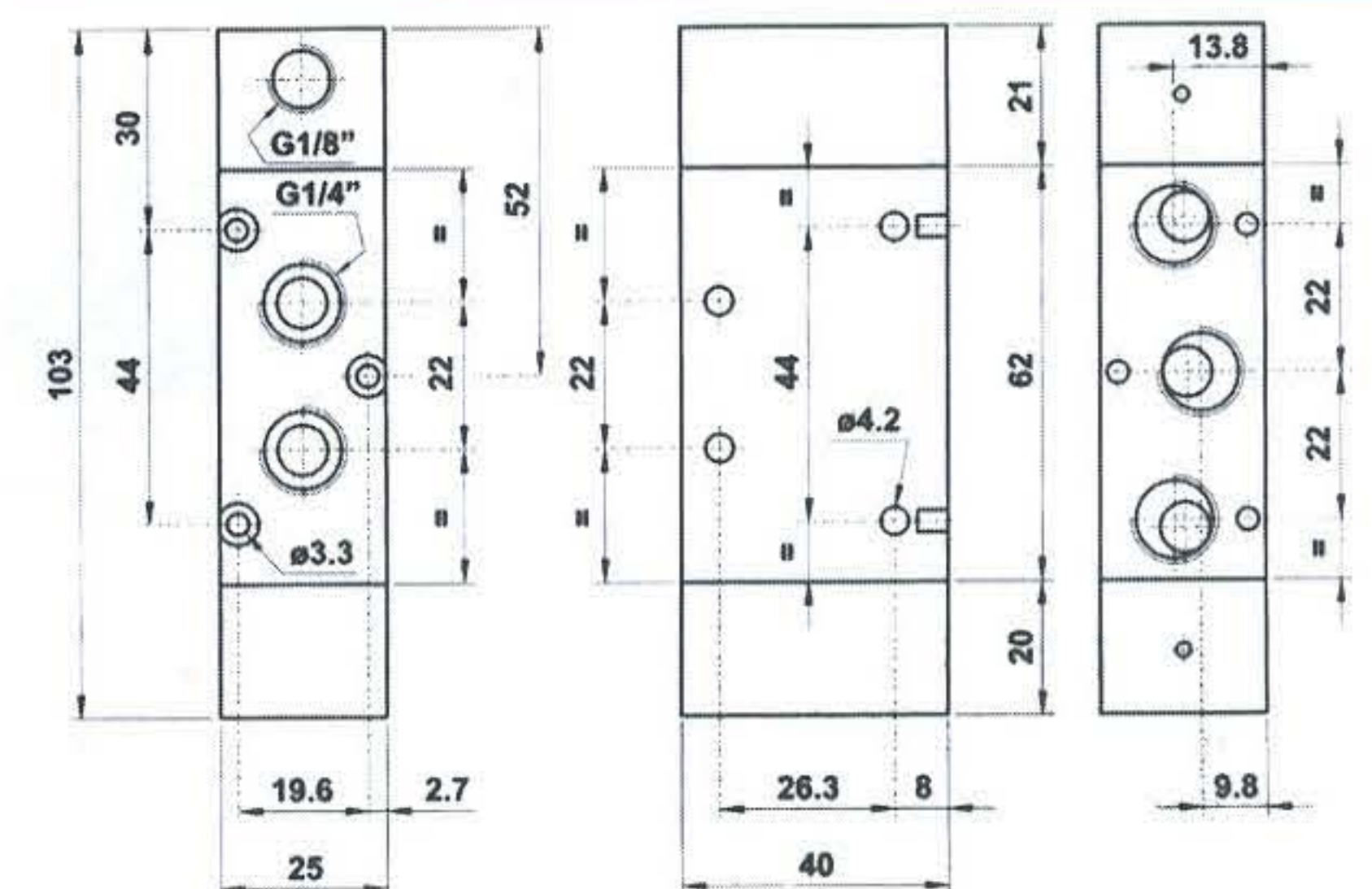
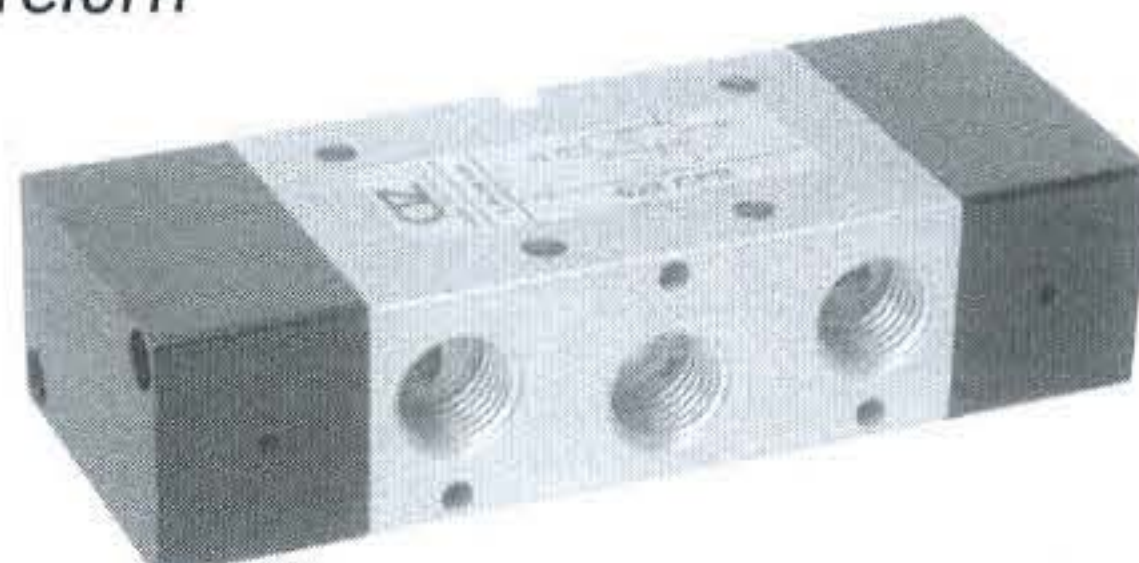
5/2 1/4" comando pneumatico - ritorno a molla  
 5/2 1/4" *pneumatic pilot - spring return*



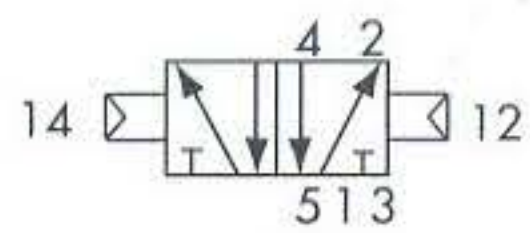
## 522 CFP



5/2 1/4" comando pneumatico - ritorno a molla pneumatica  
 5/2 1/4" *pneumatic pilot - pneumatic spring return*

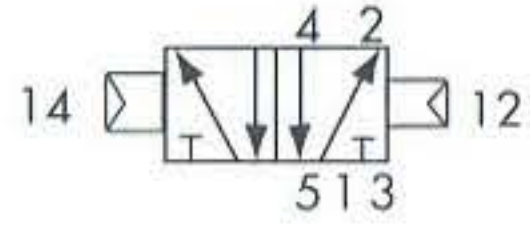


## 522 CC

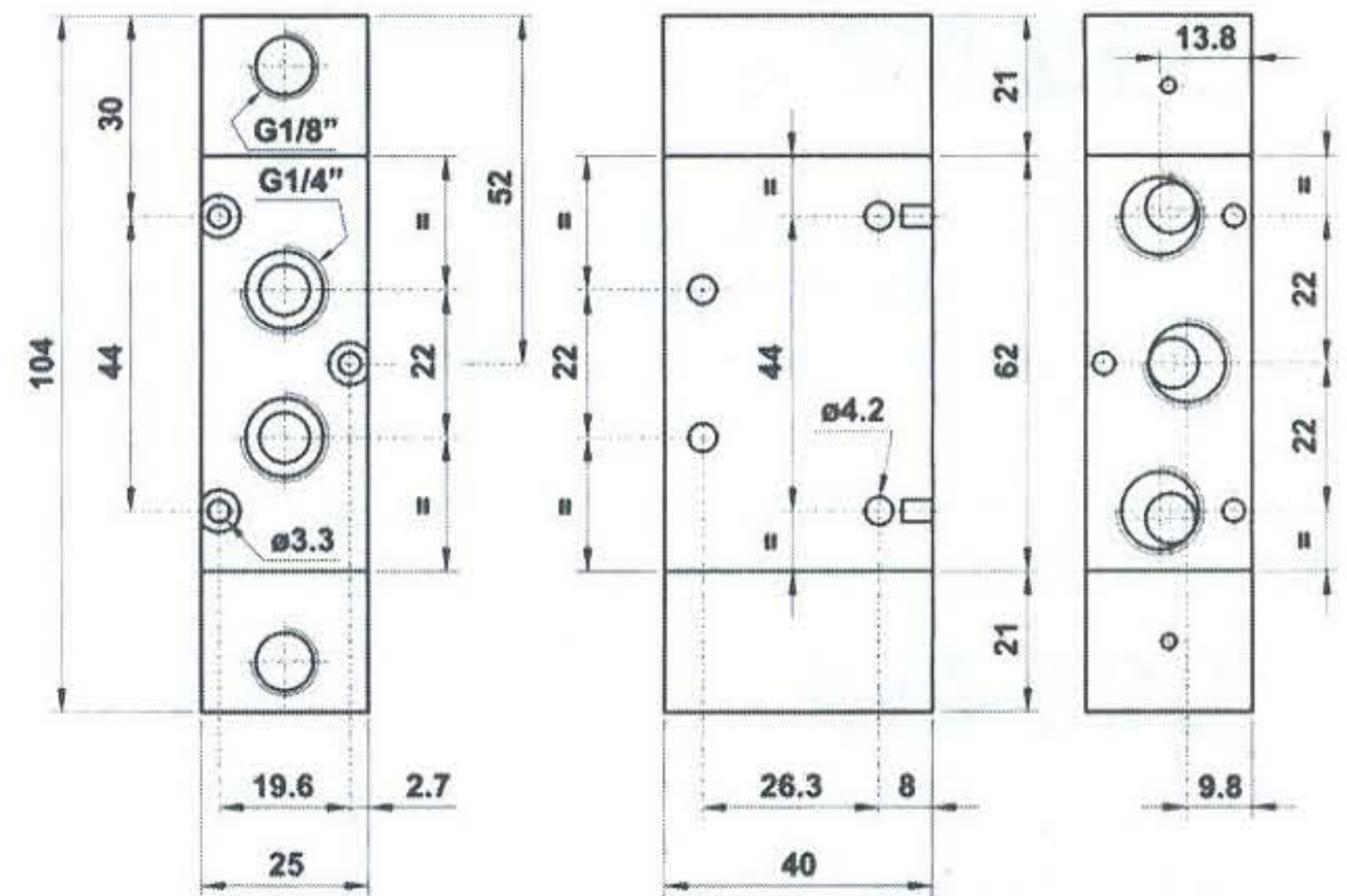
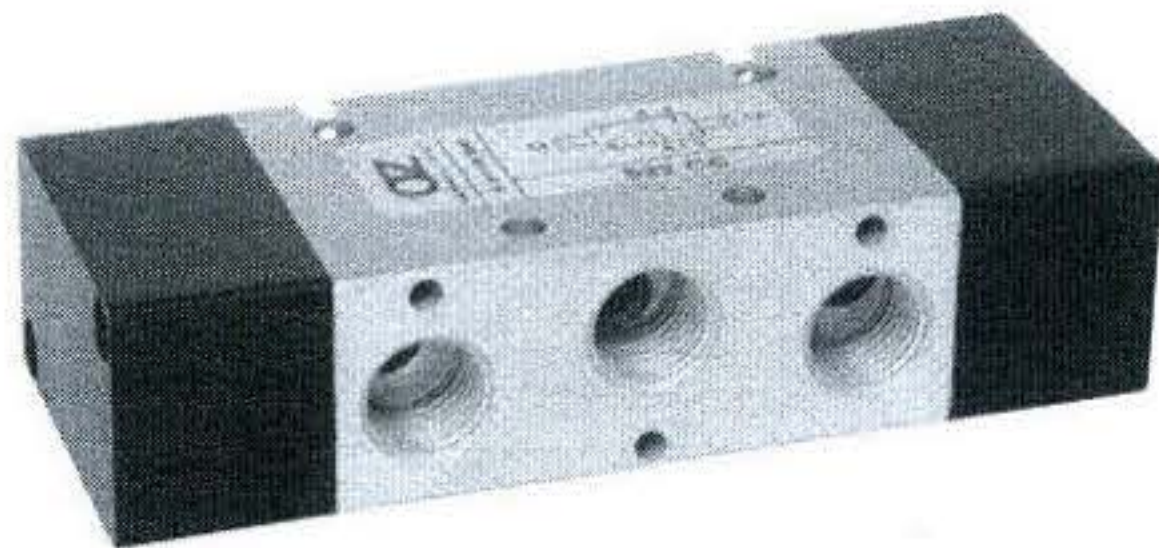


5/2 1/4" doppio comando pneumatico  
5/2 1/4" double pneumatic pilot

## 522 CCD

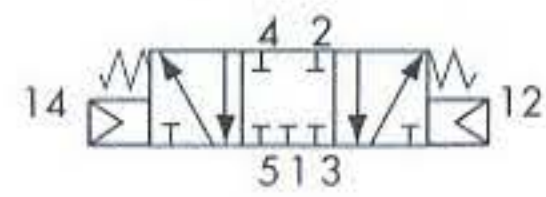


5/2 1/4" doppio comando pneumatico - con differenziale  
5/2 1/4" double pneumatic pilot - with differential



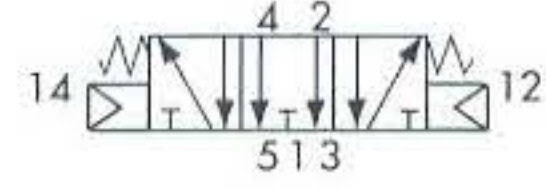
## 5223C CC

centri chiusi  
closed centres



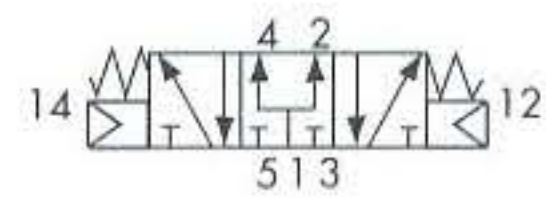
## 5223A CC

centri aperti  
open centres

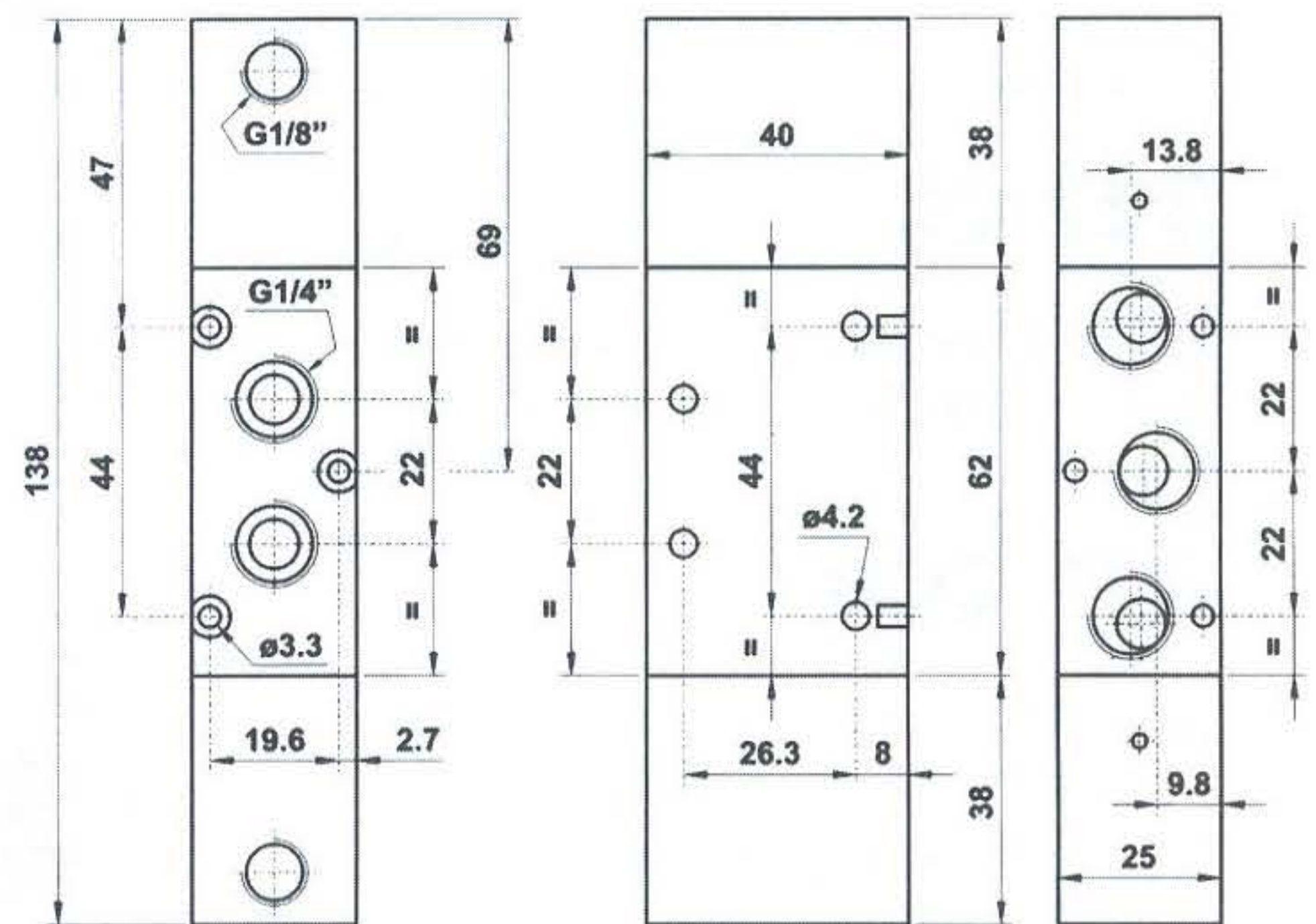
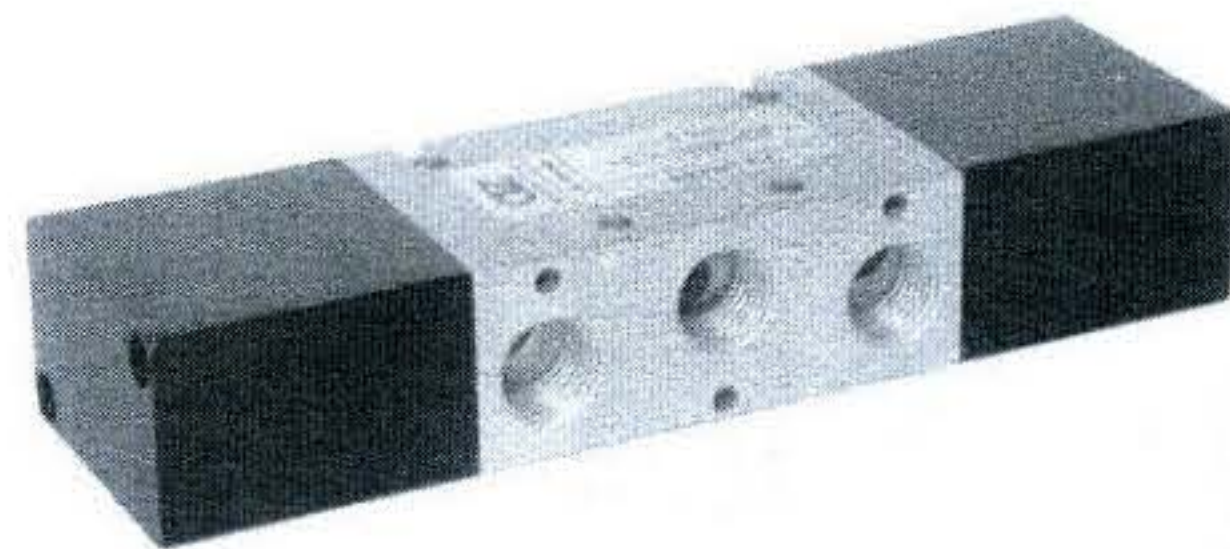


## 5223P CC

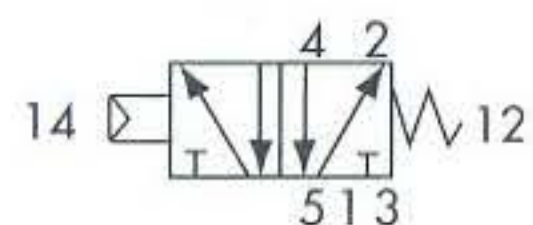
centri in pressione  
pressurized centres



5/3 1/4" doppio comando pneumatico  
5/3 1/4" double pneumatic pilot



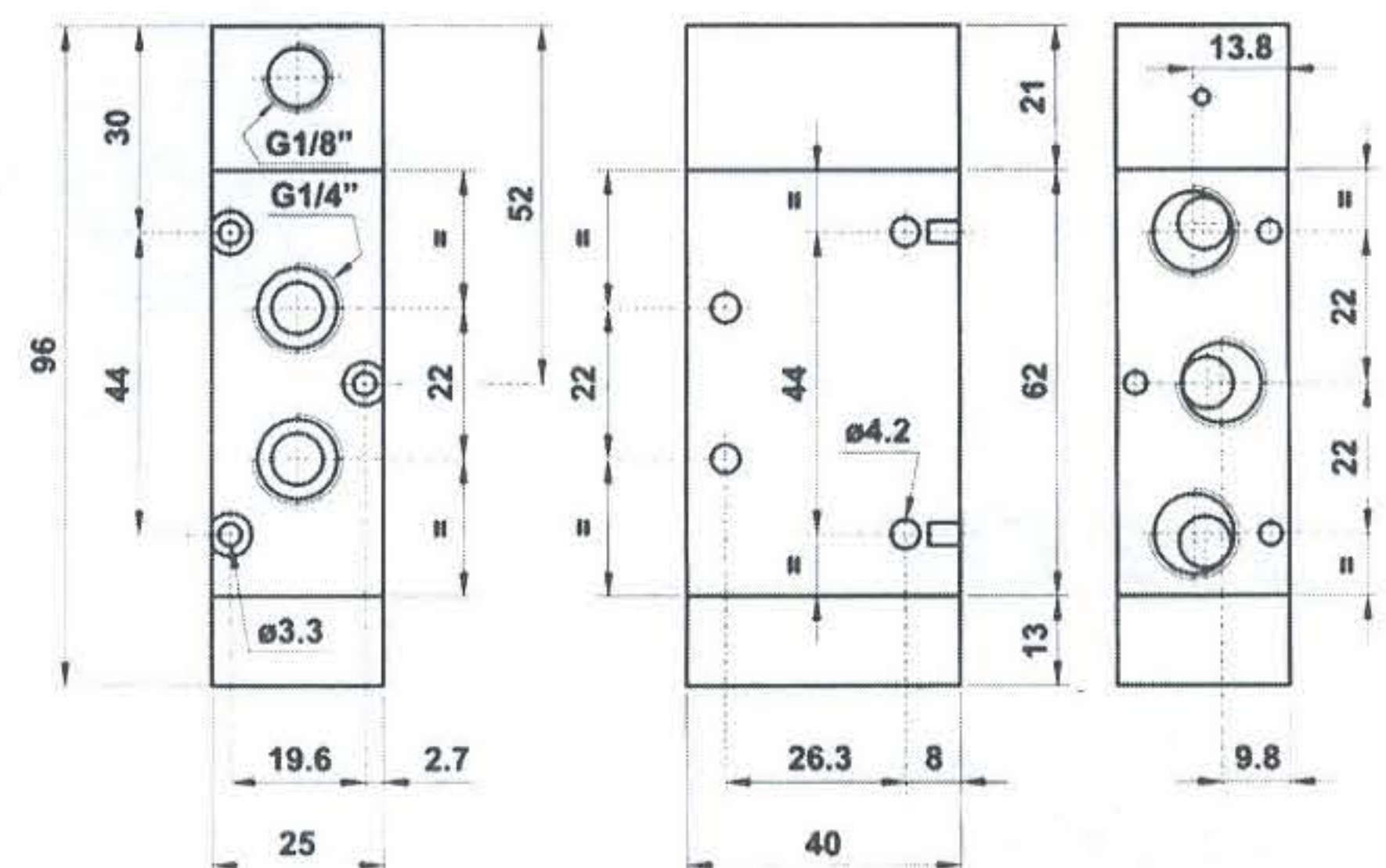
## 522 MCS



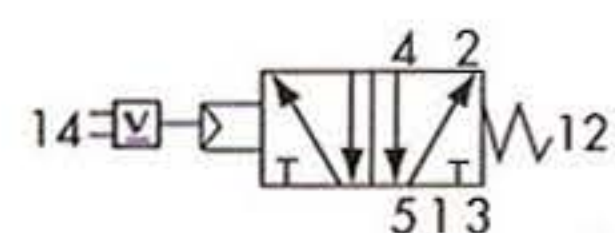
5/2 1/4" comando pneumatico 0.6 bar  
ritorno a molla  
5/2 1/4" pneumatic pilot 0.6 bar  
spring return

Pressione di lavoro: min. 2.5 bar (0.25 MPa)  
Pressione di comando: min. 0.6 bar (0.06 MPa)

Work pressure: min. 2.5 bar (0.25 MPa)  
Pilot pressure: min. 0.6 bar (0.06 MPa)



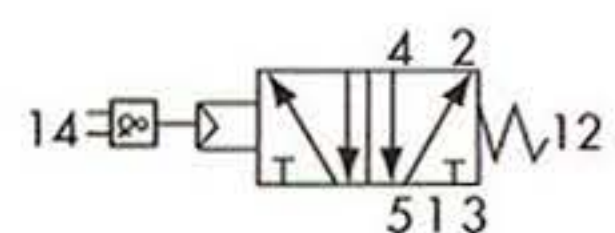
## 522-ORM



5/2 1/4" comando pneum. con elemento OR integrato ritorno a molla

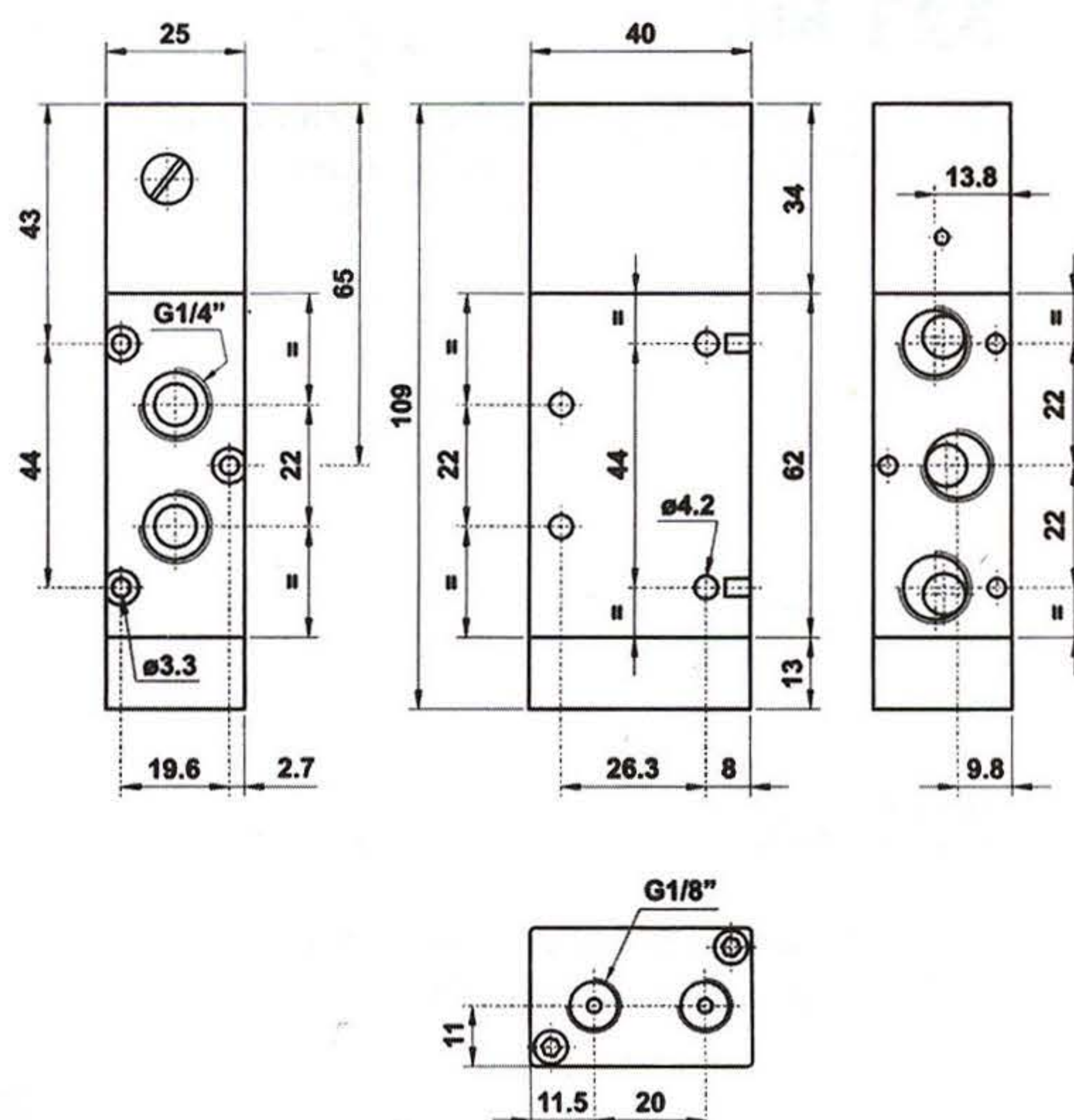
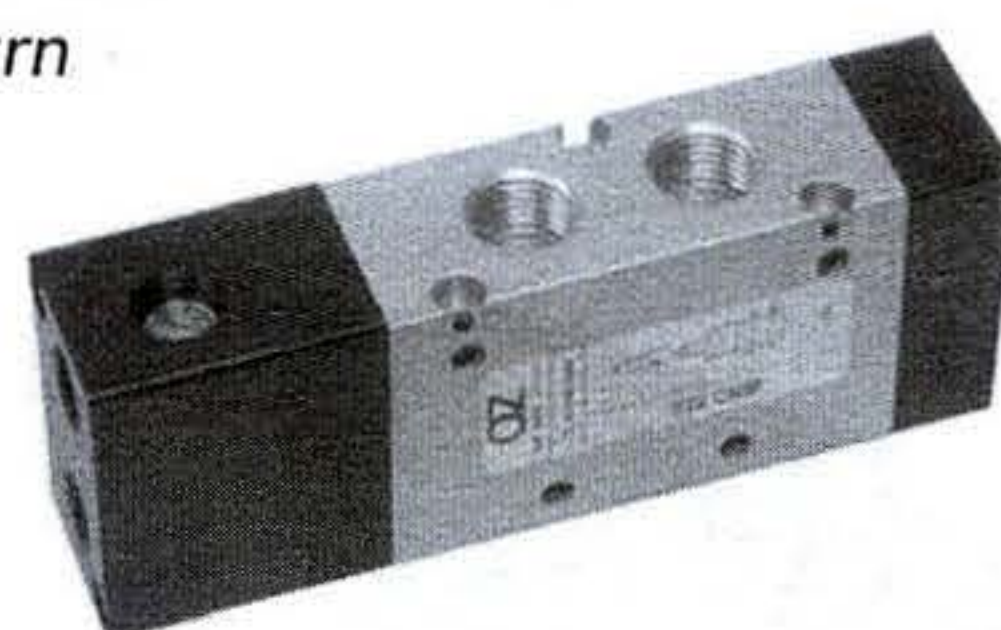
5/2 1/4" *pneumatic pilot with integrated OR element spring return*

## 522-ANDM

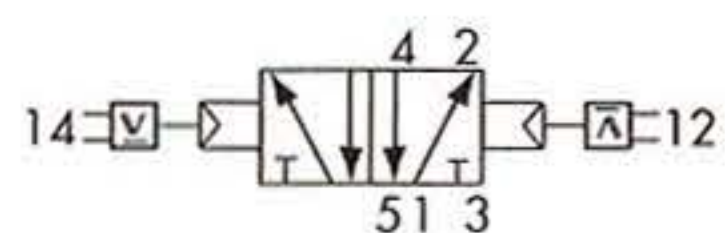


5/2 1/4" comando pneum. con elem. AND integrato - ritorno a molla

5/2 1/4" *pneumatic pilot with integrated AND element - spring return*



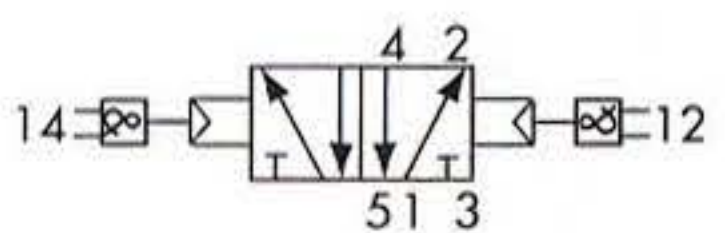
## 522-2OR



5/2 1/4" doppio comando pneumatico con elemento OR integrato

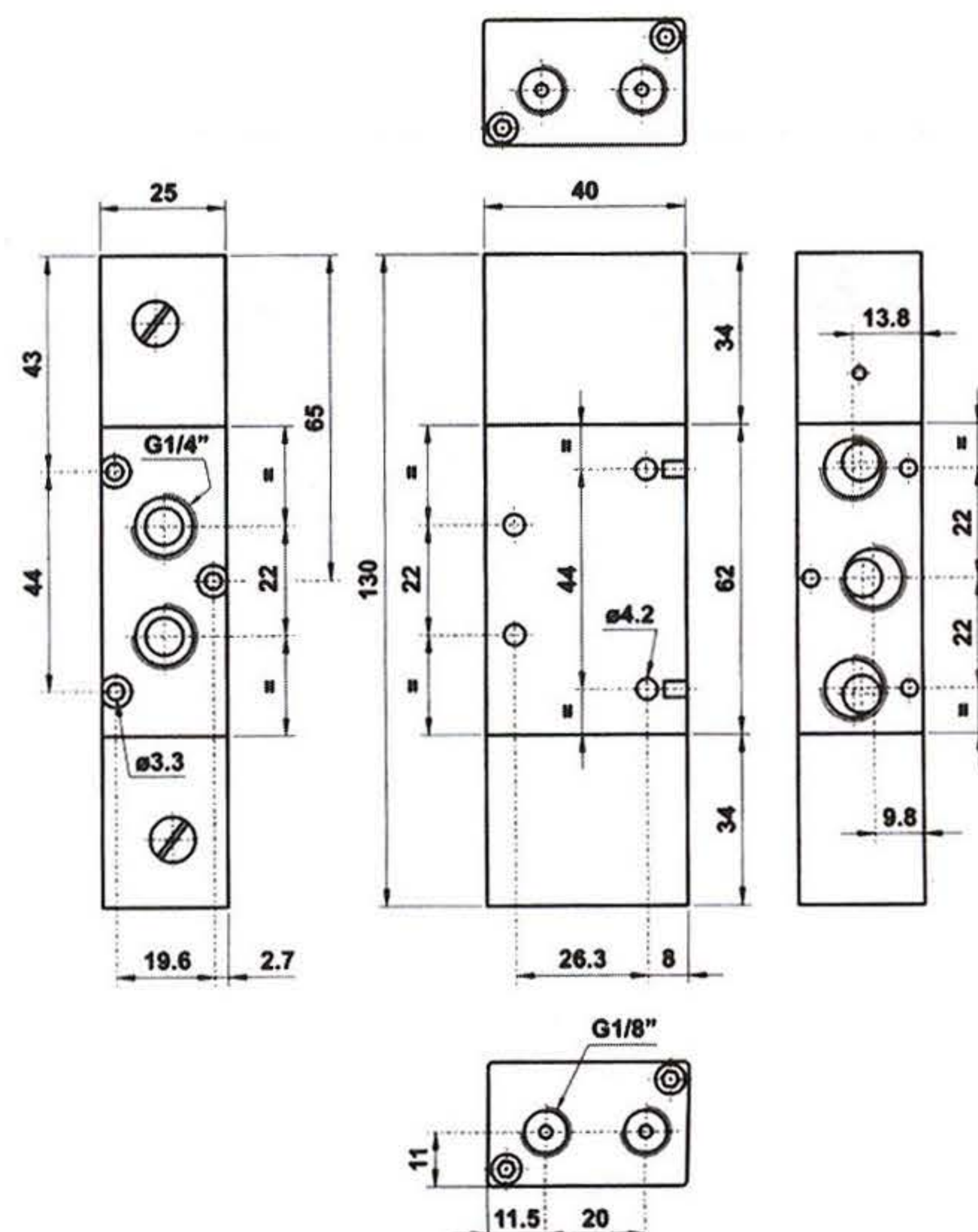
5/2 1/4" *double pneumatic pilot with integrated OR element*

## 522-2AND



5/2 1/4" doppio comando pneumatico con elemento AND integrato

5/2 1/4" *double pneumatic pilot with integrated AND element*



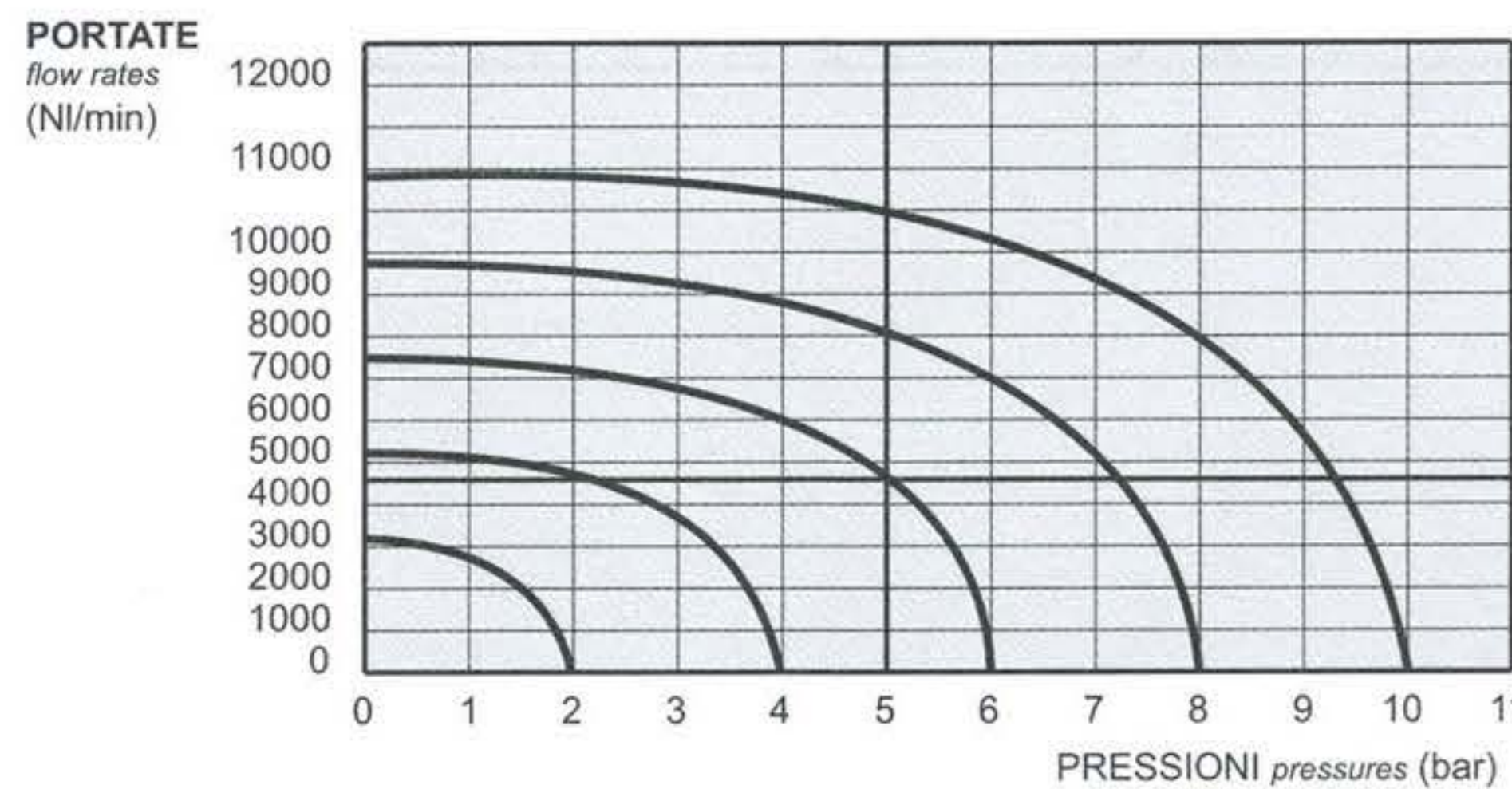
- Valvole a spola 3/2-5/2-5/3 con attacchi filettati G1/2"  
*3/2-5/2-5/3 spool valves with G1/2" threaded ports*
- Elevatissima portata  
*Very high flow rate*
- Montaggio in linea  
*Installation in-line*
- Azionamento pneumatico monostabile o bistabile  
*Mono-stable or bi-stable pneumatic pilot*
- Multifunzionalità e adattabilità  
*Multifunction feature*



**Versione ATEX II 2GD cII T6  
su richiesta**

### Tempi di risposta - *response times*

monostabile <i>mono-stable</i>	TRA (14): 24 ms TRR (12): 43 ms
bistabile <i>bi-stable</i>	TRA (14): 30 ms TRR (12): 30 ms



Diametro nominale <i>Nominal orifice</i>	13 mm	
Portata nominale a 6 bar, Δp 1 bar <i>Nominal flow rate at 6 bar, Δp 1 bar</i>	4600 NI/min	
Temperatura di esercizio <i>Temperature range</i>	max +60°C	
Pressione di esercizio <i>Working pressure</i>	monostabile [ <i>mono-stable</i> ]	bistabile [ <i>bi-stable</i> ]
	2.5 ... 10 bar 0.25 ... 1 MPa	-0.9 ... 10 bar -0.09 ... 1 MPa
Pressione di azionamento <i>Actuating pressure</i>	monostabile [ <i>mono-stable</i> ]	bistabile [ <i>bi-stable</i> ]
	2.5 ... 10 bar 0.25 ... 1 MPa	1 ... 10 bar 0.1 ... 1 MPa
Fluido <i>Fluid</i>	Aria filtrata 50μ con o senza lubrificazione <i>50μ filtered, lubricated or non lubricated air</i>	

### Materiali

Corpo: alluminio 11S  
Molle: INOX  
Guarnizioni: NBR  
Spola: alluminio nichelato  
Parti interne: ottone OT58

### Materials

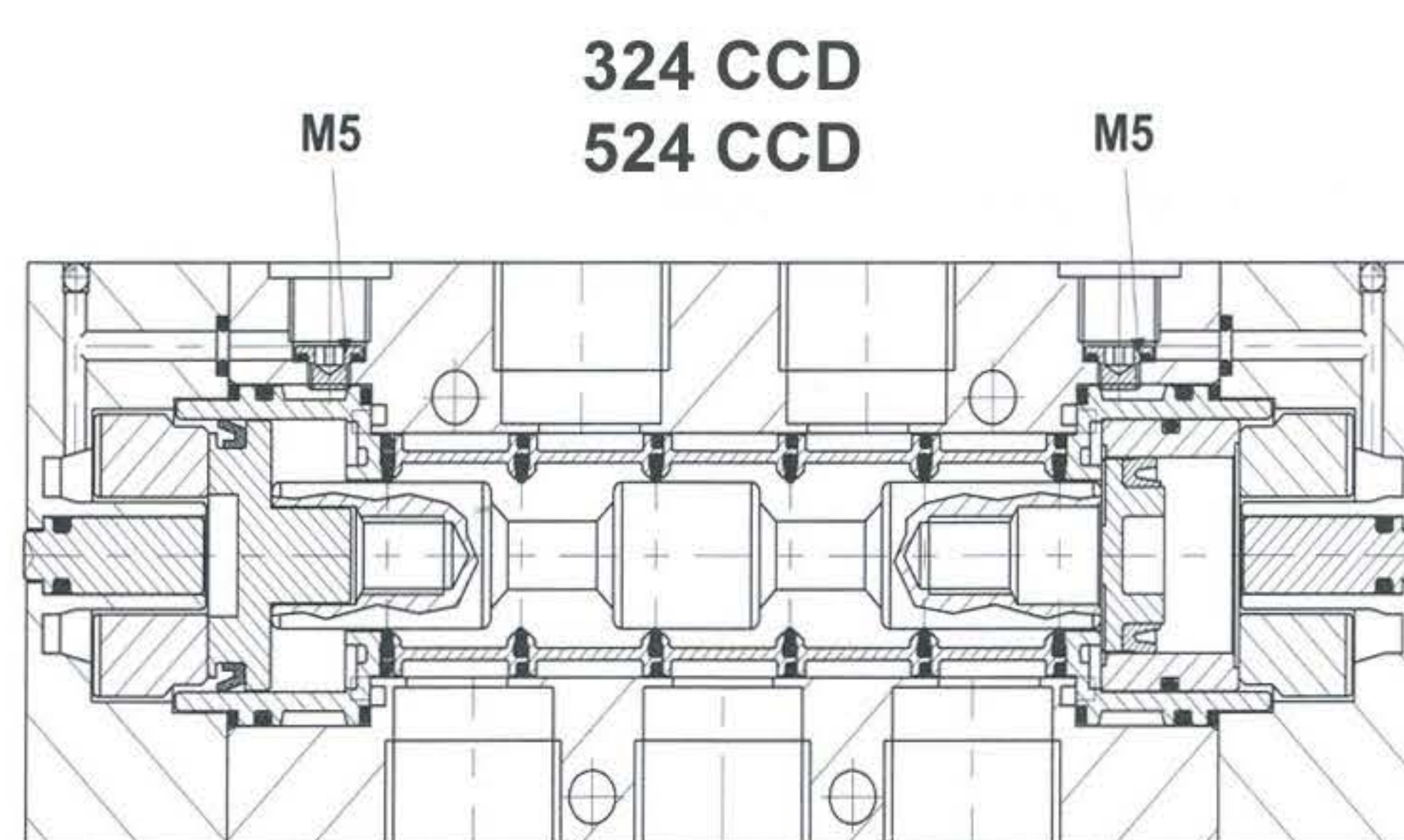
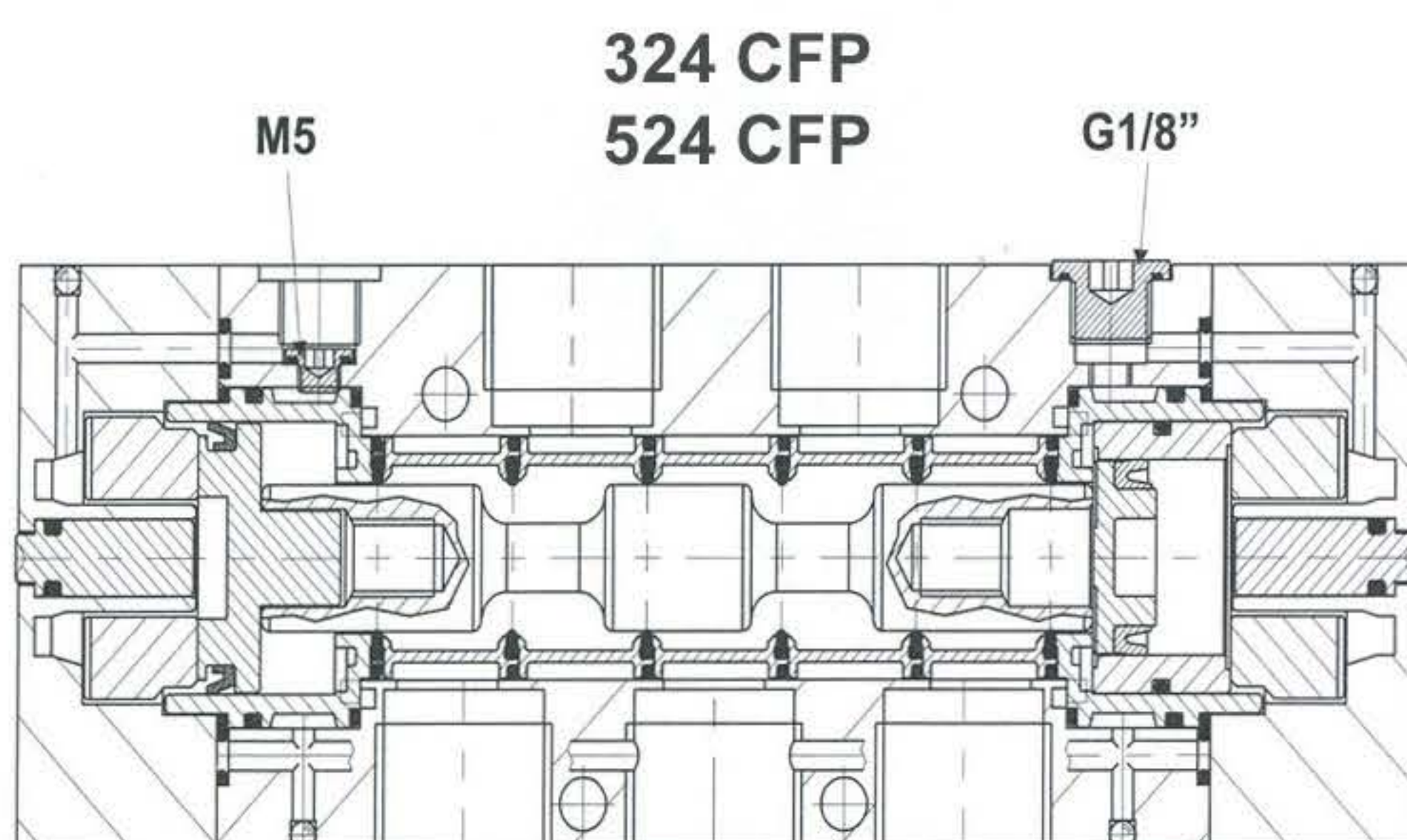
Body: aluminium 11S  
Springs: stainless steel  
Seals: NBR  
Spool: nickel plated aluminium  
Internal parts: brass OT58

## Multifunzionalità e adattabilità della valvola

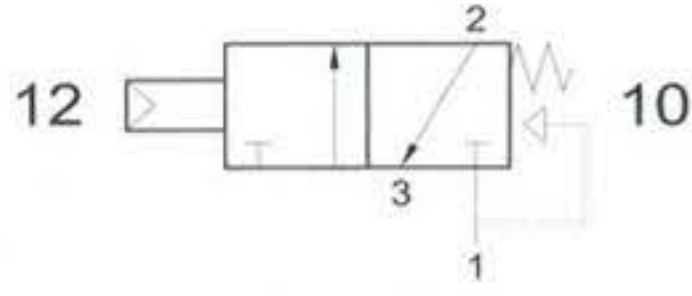
La funzione della valvola può essere variata in ogni momento secondo necessità cambiando la posizione dei tappi da M5 e G1/8" collocati nel corpo secondo gli schemi sottoriportati. La valvola è fornita nella configurazione richiesta al momento dell'ordine. Eventuali tappi aggiuntivi possono essere ordinati separatamente.

## Multifunction feature of the valve

The function of the valve can be changed in any moment. To do this it enough to change the position of the plugs M5 and G1/8", which are inserted into the body according to the scheme. The valve is supplied in the configuration specified on the order. More plugs can be ordered separately.

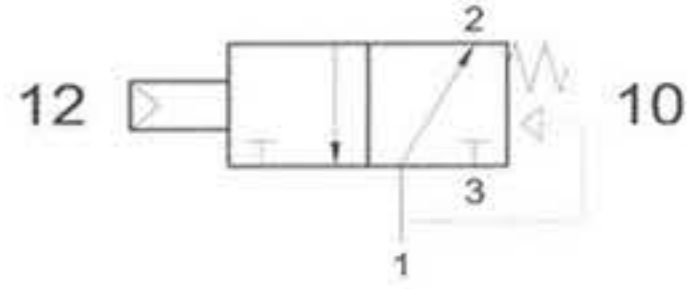


## 324 MC



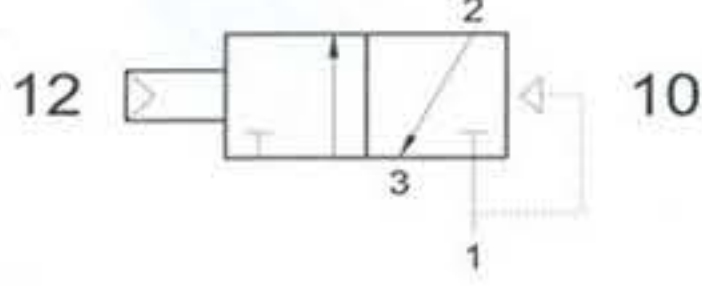
3/2 1/2" NC comando pneumatico - ritorno a molla  
3/2 1/2" NC pneumatic pilot - spring return

## 324 MCA



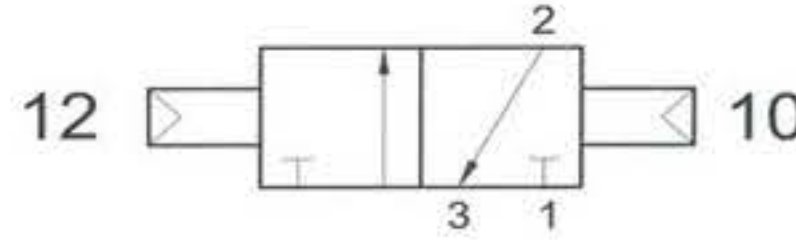
3/2 1/2" NA comando pneumatico - ritorno a molla  
3/2 1/2" NO pneumatic pilot - spring return

## 324 CFP



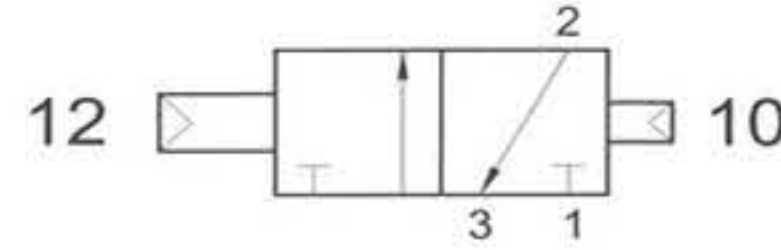
3/2 1/2" NC comando pneumatico - ritorno a molla pneumatica  
3/2 1/2" NC pneumatic pilot - pneumatic spring return

## 324 CC



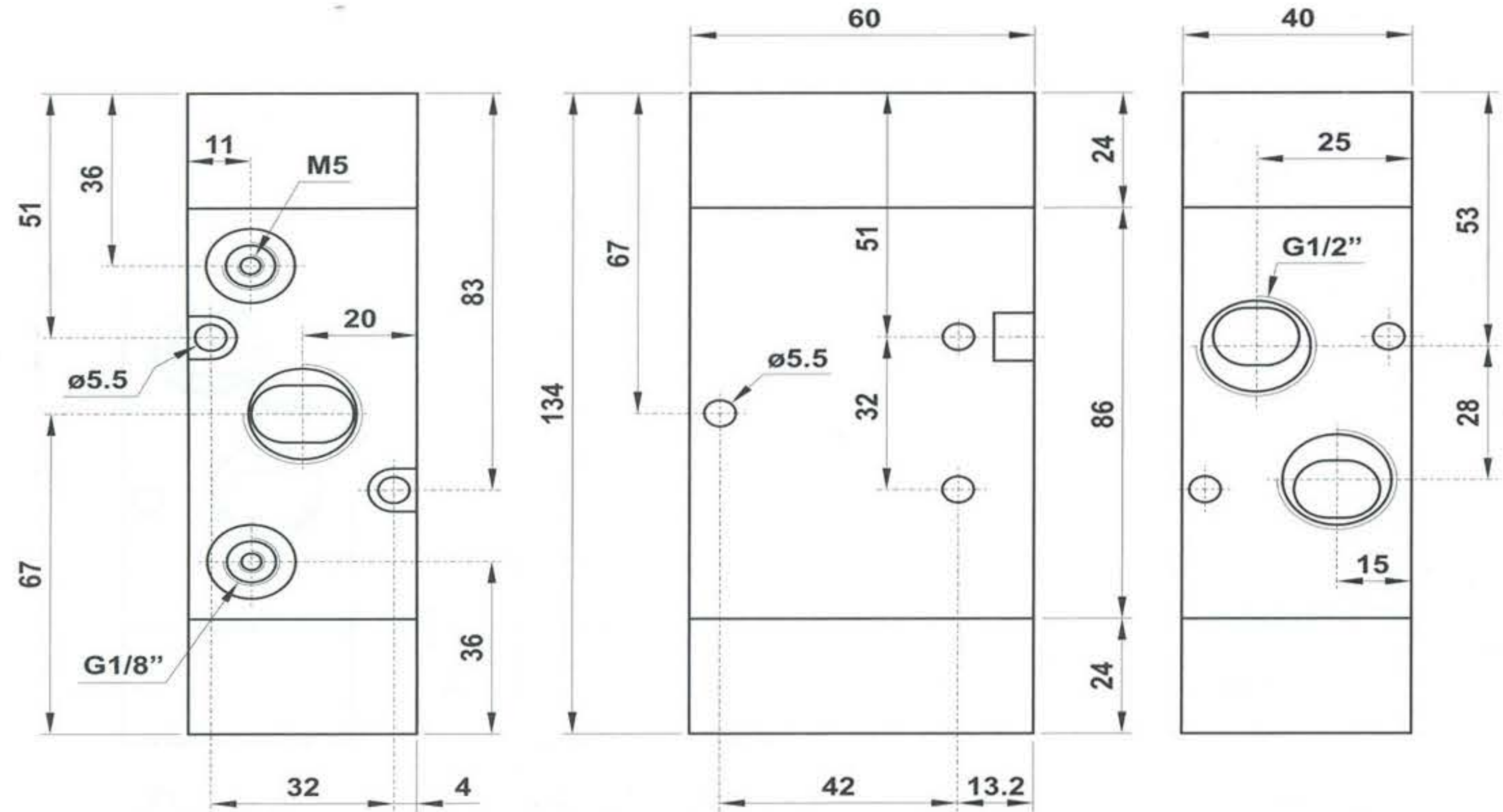
3/2 1/2" doppio comando pneumatico  
3/2 1/2" double pneumatic pilot

## 324 CCD

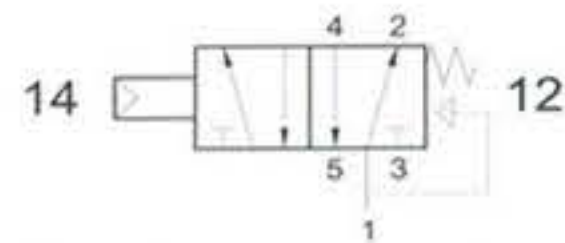


3/2 1/2" doppio comando pneumatico - con differenziale  
3/2 1/2" double pneumatic pilot - with differential

Può essere utilizzata con vuoto.  
It can be used with vacuum.

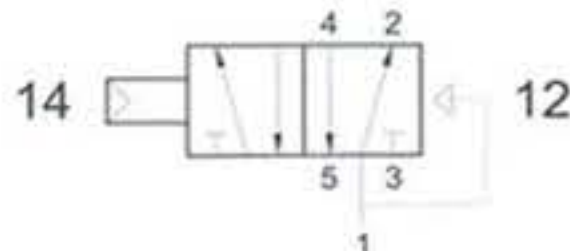


## 524 MC



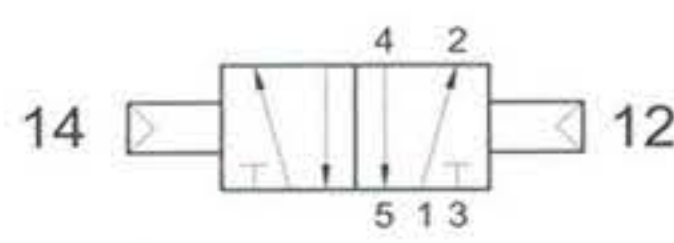
5/2 1/2" comando pneumatico - ritorno a molla  
5/2 1/2" pneumatic pilot - spring return

## 524 CFP



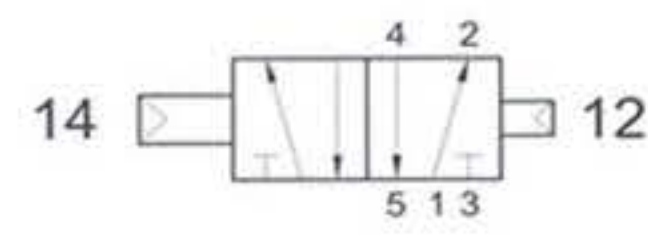
5/2 1/2" comando pneumatico - ritorno a molla pneumatica  
5/2 1/2" pneumatic pilot - pneumatic spring return

## 524 CC



5/2 1/2" doppio comando pneumatico  
5/2 1/2" double pneumatic pilot

## 524 CCD



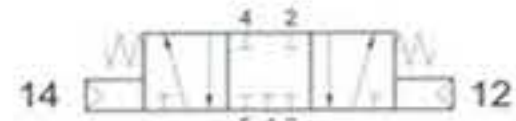
5/2 1/2" doppio comando pneumatico - con differenziale  
5/2 1/2" double pneumatic pilot - with differential

Può essere utilizzata con vuoto.  
It can be used with vacuum.



## 5243C CC

centri chiusi  
closed centres



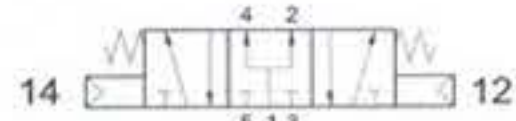
## 5243A CC

centri aperti  
open centres



## 5243P CC

centri in pressione  
pressurized centres



5/3 1/2" doppio comando pneumatico  
5/3 1/2" double pneumatic pilot

